

PLANNING MAPS

1 Waiti	16 Piarere	30 Morrinsville
2 Koputai	17 Hinuera-Te Poi	31 Waharoa
3 Mangaiti	18 Selwyn	32 Matamata
4 Hangawera Hills	19 Te Aroha	33 Matamata
5 Mangateparu-Springdale	20 Te Aroha	34 Matamata
6 Te Aroha Environs	21 Te Aroha	34 Matamata
7 Morrinsville Environs	22 Te Aroha	36 Douglas Rd-Okauia
8 Ngarua	22a Te Aroha Central	37 Tahuna
9 Manawaru-Shaftesbury	23 Waihou	38 Manawaru
10 Motumaoho-Tahuroa	24 Waitoa	39 Walton
11 Kereone-Walton	25 Tatuanui	40 Tower Rd-Matamata
12 Wardville-Gordon	26 Morrinsville	41 Te Poi
13 Richmond Downs	27 Morrinsville	42 Hinuera
14 Matamata Environs	28 Morrinsville	
15 Okauia	29 Morrinsville	

DEVELOPMENT CONCEPT PLANS
(See Schedule 5 Part B)

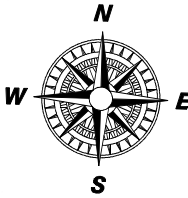
43 NZ Mushrooms Ltd-Snell St Morrinsville
44 Fonterra Morrinsville
45 NZ Mushrooms-Taukoro Rd Morrinsville
46 ICHM Ltd & BOP Fertiliser Ltd Morrinsville
47 Tatua co-Operative Dairy Co Ltd Tatuanui
48 Fonterra Waitoa
49 Wallace Corporation Ltd
50 Inghams Enterprises (New Zealand) Ltd
51 Te Aroha Skin Processors Ltd
52 Totara Springs Christian Centre
53 IB & JB Diprose Barton Rd Okauia
54 DL & JL Swaps
56 Richmond Ltd
59 Greenlea Premier Meats Ltd

MATAMATA AIRPORT HEIGHT CONTROL SURFACES
(See Appendix 6 Part B)

55 Matamata Height Control Surfaces

STRUCTURE PLANS
(See Appendix 9 Part B)

57 Banks Rd Matamata
58 Eldonwood South Matamata
60 Stirling Street Te Aroha
61 Tower Road Matamata
62 Horrell Road Morrinsville



Matamata-Piako District
PLANNING MAPS INDEX
Scale 1:230,000






Matamata-Piako District Plan Legend




	INDUSTRIAL		CHARACTER AREA
	RESIDENTIAL		EQUINE AREA
	RURAL		RESIDENTIAL INFILL AREA
	BUSINESS		FUTURE RESIDENTIAL POLICY AREA
	RURAL RESIDENTIAL 1		PEAT SOIL
	RURAL RESIDENTIAL 2		FLOOD HAZARD
	KAITIAKI (CONSERVATION)		WATER COURSE
	DESIGNATED SITE		DETENTION PONDS & SPILLWAYS
	HERITAGE SITE		CROWN LAND RESERVED FROM SALE
	PROTECTED TREE OR OBJECT		RESERVE
	WAAHI TAPU SITE		FIRE LINE EDGE
	STRUCTURE PLAN		FIRE HAZARD BUFFER
	PRINCIPAL ROAD LANDSCAPING AREA		DISTRICT BOUNDARY
	SHOP FRONTAGE		PARCEL BOUNDARY
	WATER CATCHMENT ZONE		ROAD
	INSTABILITY AREA		DESIGNATION
	BUSINESS/RESIDENTIAL INTERFACE AREA		NOISE EMISSION CONTROL BOUNDARY

Third Party Works and Utility Features



Waikato Regional Council

	FLOODGATE
	PUMP STATION
	EMBANKMENT




Powerco

	SITE
	SUB TRANS OVERHEAD LINE CORRIDOR
	SUB TRANS UNDERGROUND CABLE CORRIDOR

Transpower

	SITE
	TRANSMISSION LINE

Vector Gas

	GAS PIPELINE
	GAS STATION SITE
	GAS PIPE CORRIDOR

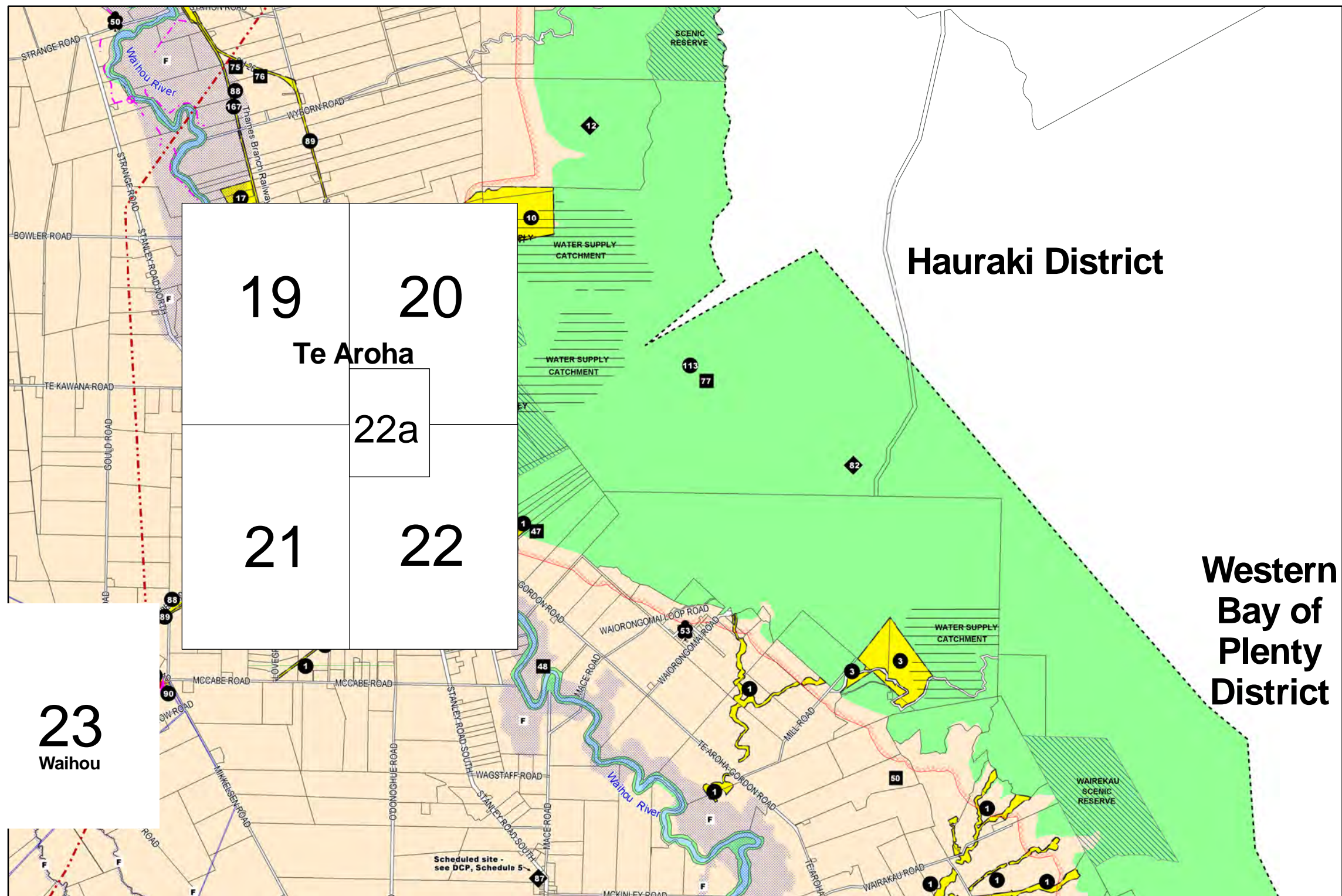
Disclaimer: Matamata-Piako District Council is required to map essential infrastructure information provided by third parties. This data may be updated by those third parties without our knowledge at any time. This data has been provided on August 2016 pursuant to the Local Government Official Information and Meetings Act 1987. While every effort has been made to ensure accuracy of the data, Matamata-Piako District Council does not guarantee its accuracy or suitability for any purpose. Matamata-Piako District Council shall not be responsible for the misuse or misinterpretation of the data supplied and shall not be liable for any loss, damage, cost or expense (whether direct or indirect) arising from reliance upon or use of any information provided, or Matamata-Piako District Council's failure to provide information on this site. Users are advised to contact the following third parties: Powerco Limited: (0800) 769 372; Vector Gas Limited: (0800) 734 567; Waikato Regional Council: (0800) 800 401

Copyrights: Cadastral information derived from Land Information New Zealand Crown copyright reserved. Sub-transmission line data sourced from Powerco Limited. Refer to disclaimer in part C of the District Plan. Vector Gas Limited data is copyright reserved. Transpower New Zealand Limited data is copyright reserved. Waikato Regional Council (WRC) data is copyright reserved. Users are advised to seek permission from the relevant local authority or utility provider prior to using the data. Copyright © 2015 Matamata-Piako District Council.

MATAMATA-PIAKO DISTRICT PLAN LEGEND

Version 2 -- Operative 21 October 2015

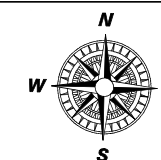




TE AROHA ENVIRONS

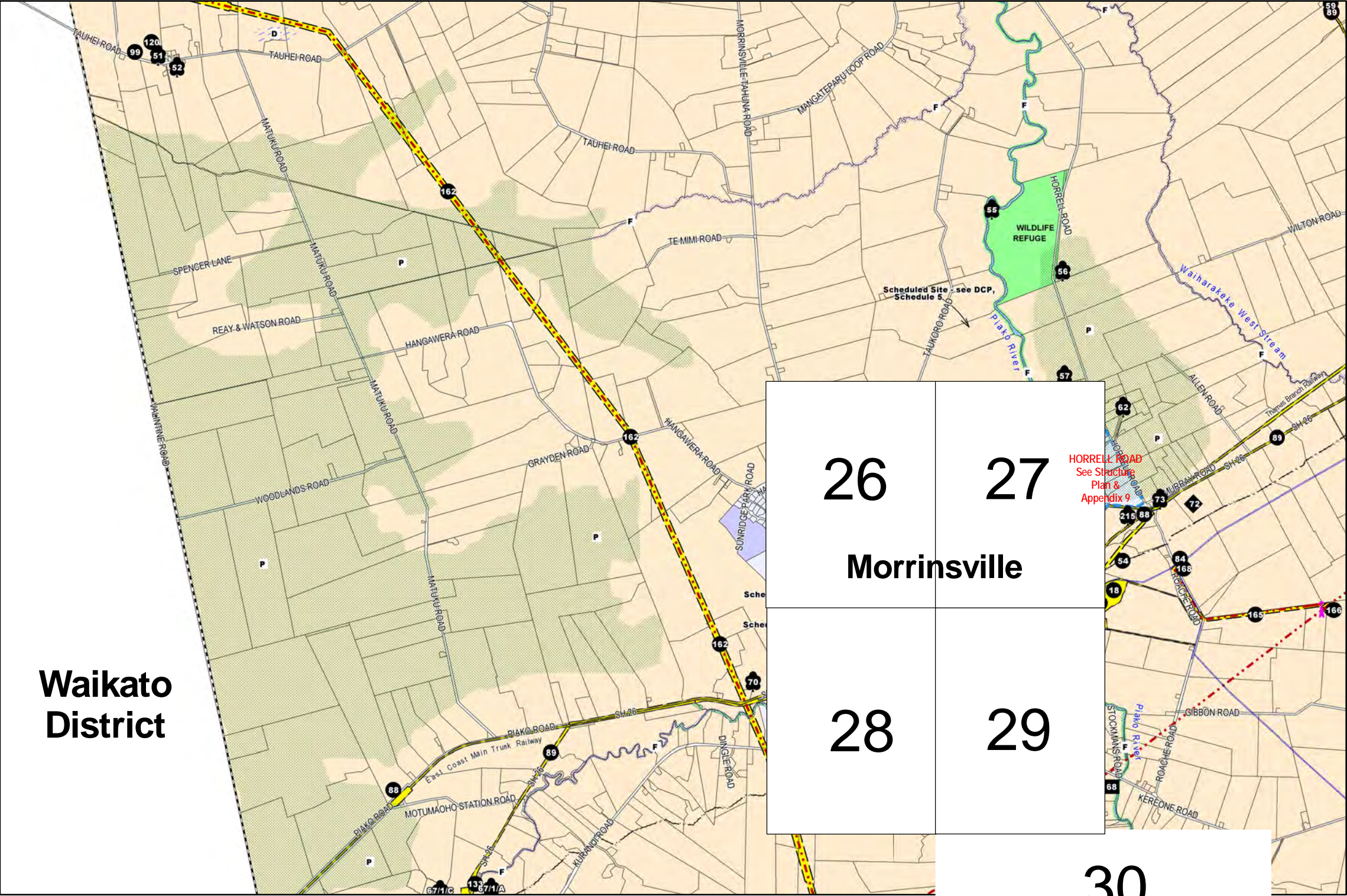
Scale 1:50,000

Version 3 – Operative 21 October 2015



	3	
5	6	
	8/9	

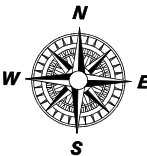




WAITI

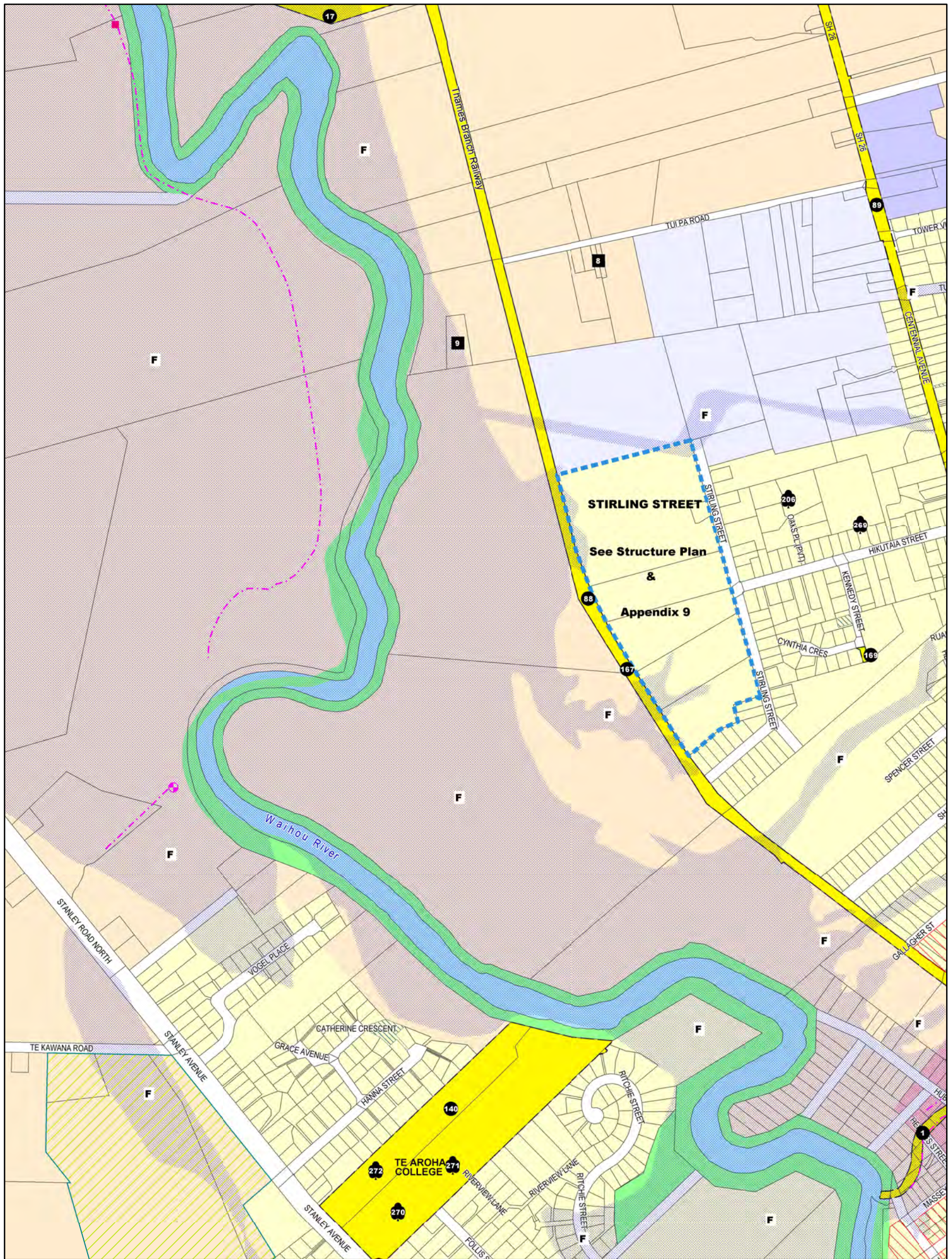
Scale 1:50,000

Version 7 – Operative 21 October 2015



4/5	
7	8
10	

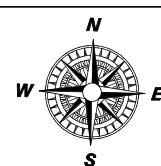




TE AROHA

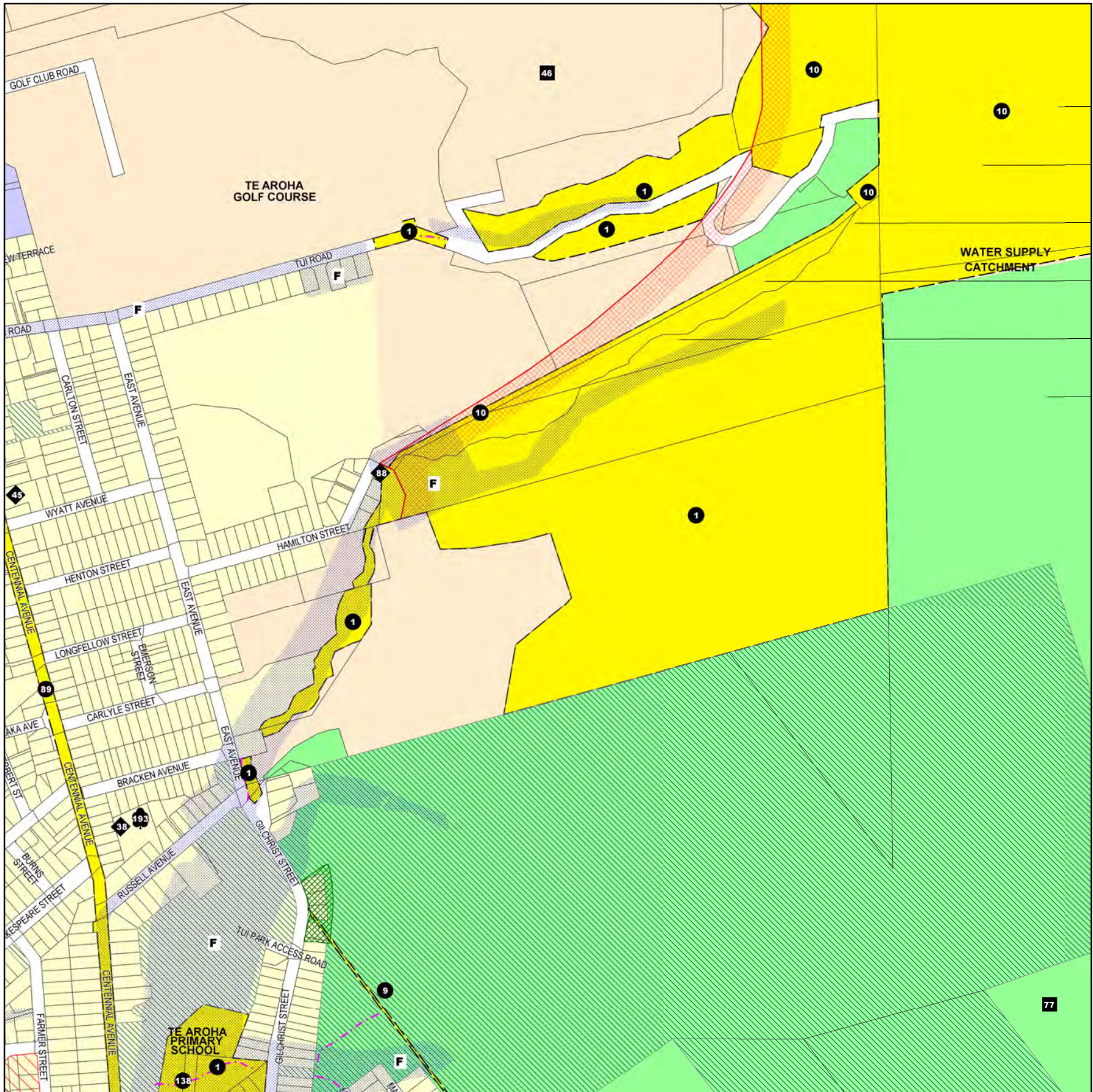
Scale 1:8,000

Version 7 -- Operative 21 October 2015



	6	
6	19	20
	21	





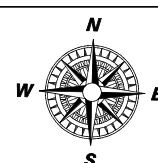
22a

Te Aroha Central

TE AROHA

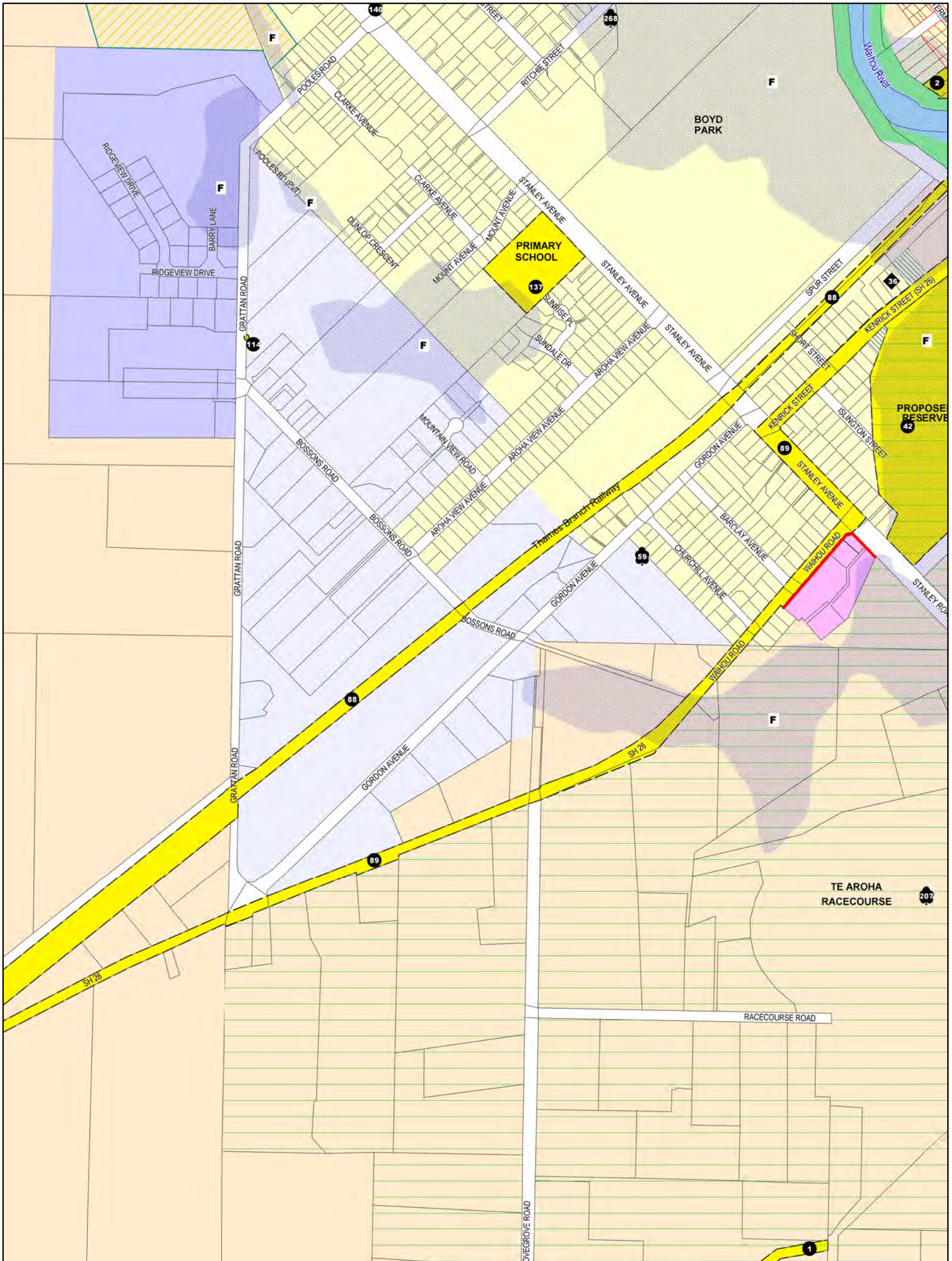
Scale 1:8,000

Version 4 -- Operative 21 October 2015



	6	
19	20	6
	22	

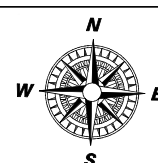




TE AROHA

Scale 1:8,000

Version 5 -- Operative 27 March 2013

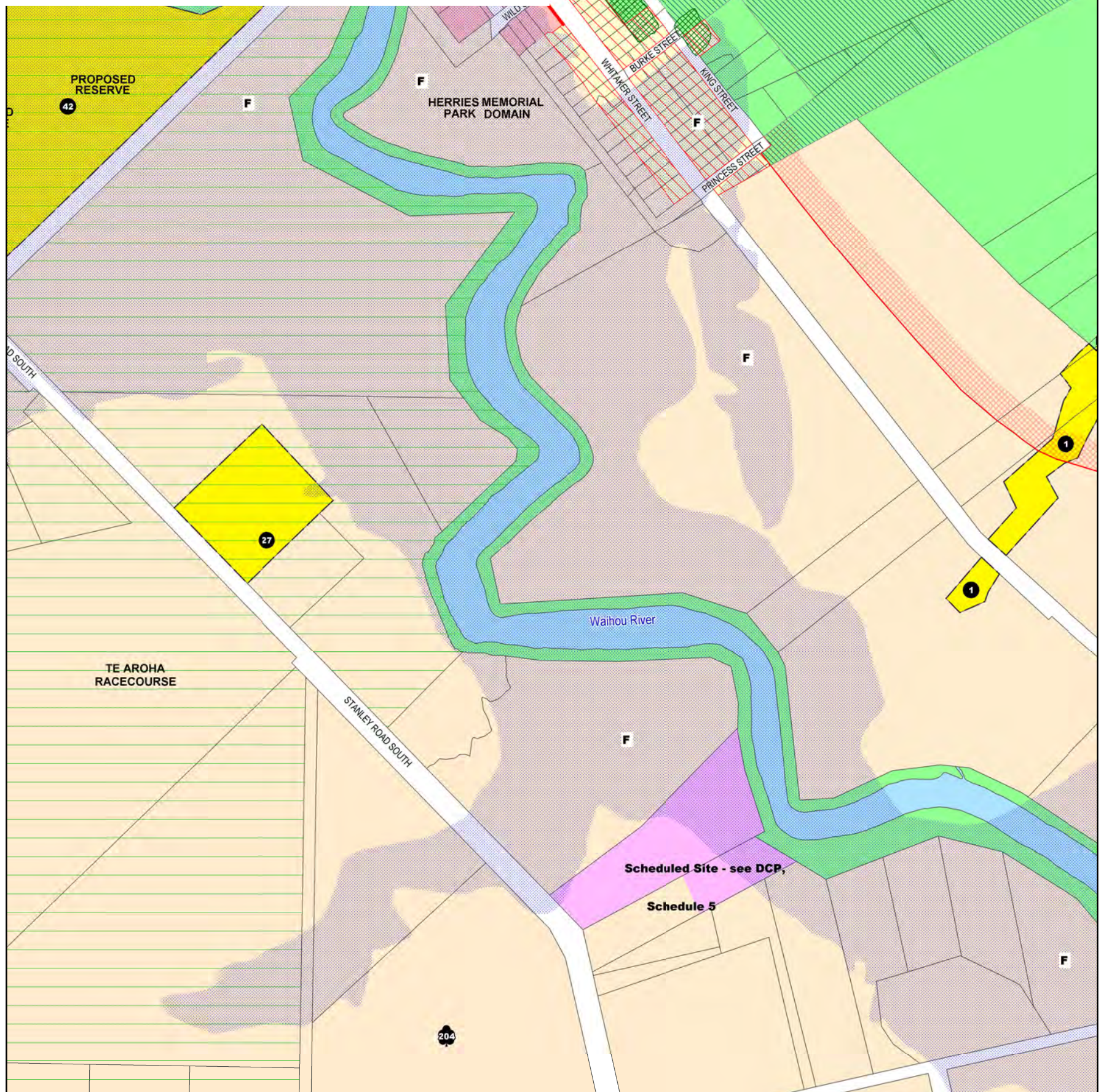


	19	
6	21	22
	6	



22a

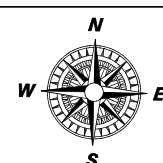
Te Aroha Central



TE AROHA

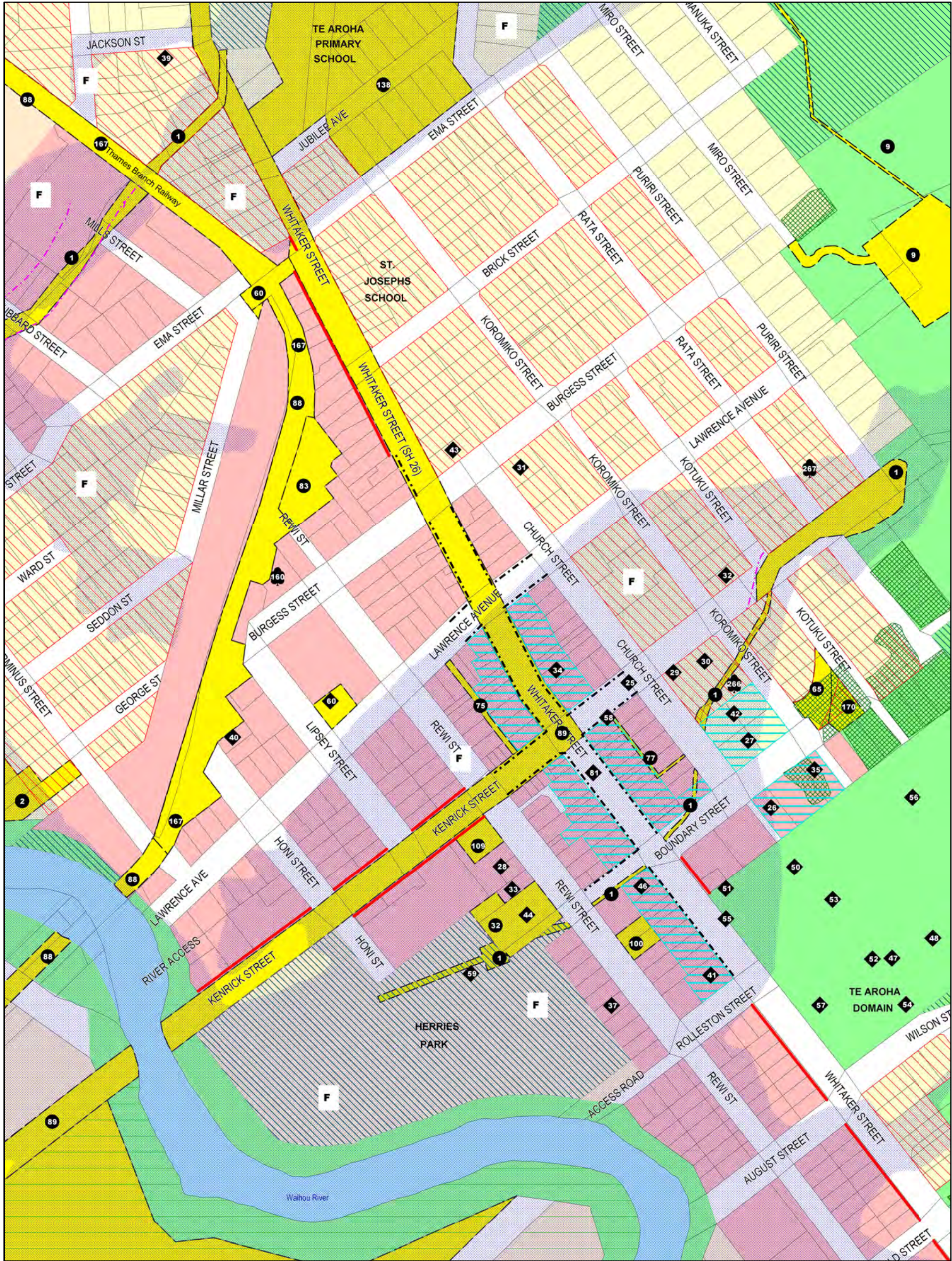
Scale 1:8,000

Version 2 – Operative 5 October 2011



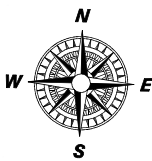
	20	
21	22	6
	6	





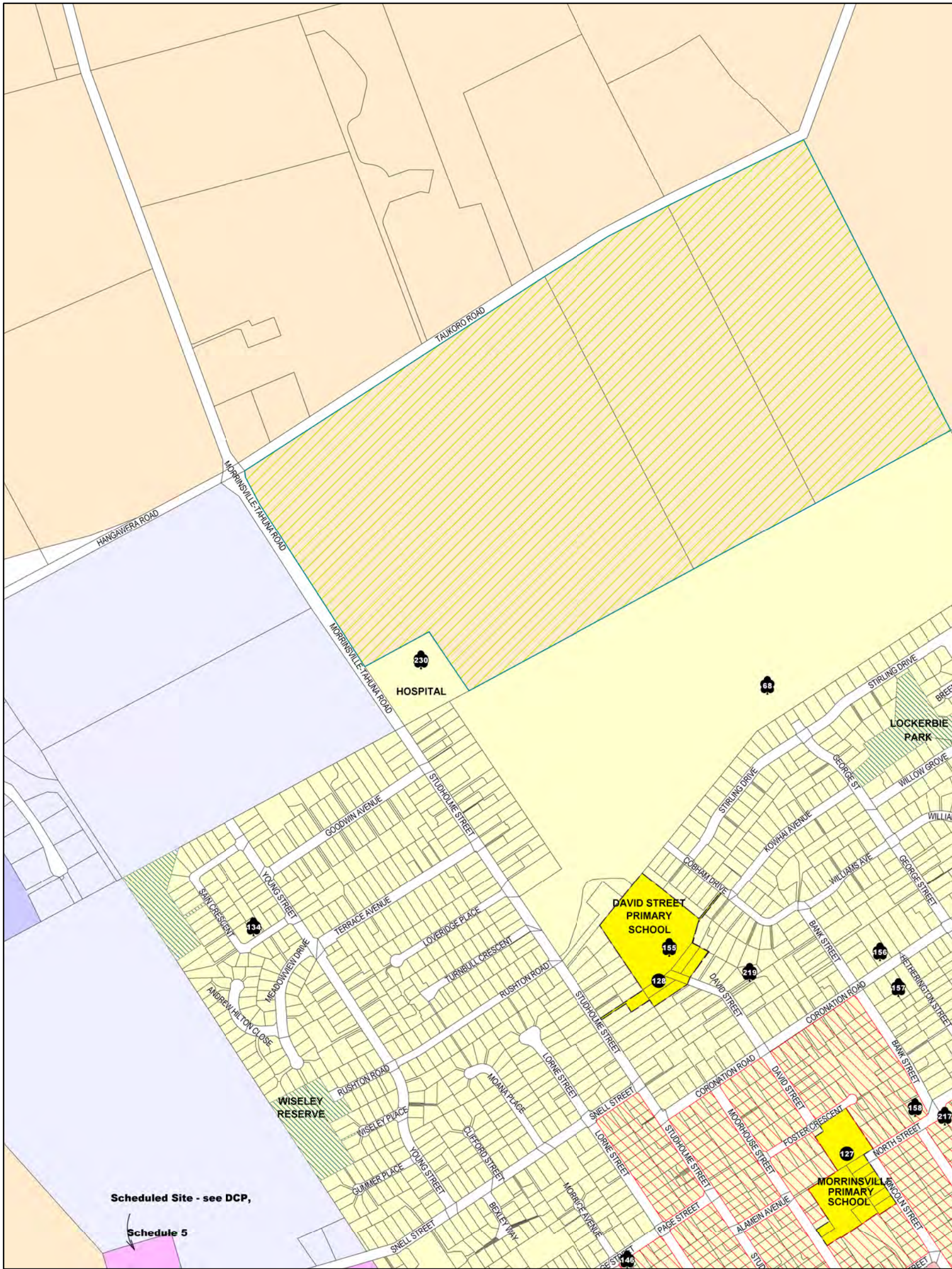
TE AROHA CENTRAL

Scale 1:4,000
Version 8 – Operative 21 October 2015



19/21	20	20/22
	22a	
	22	

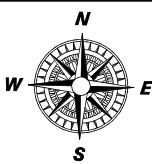




MORRINSVILLE

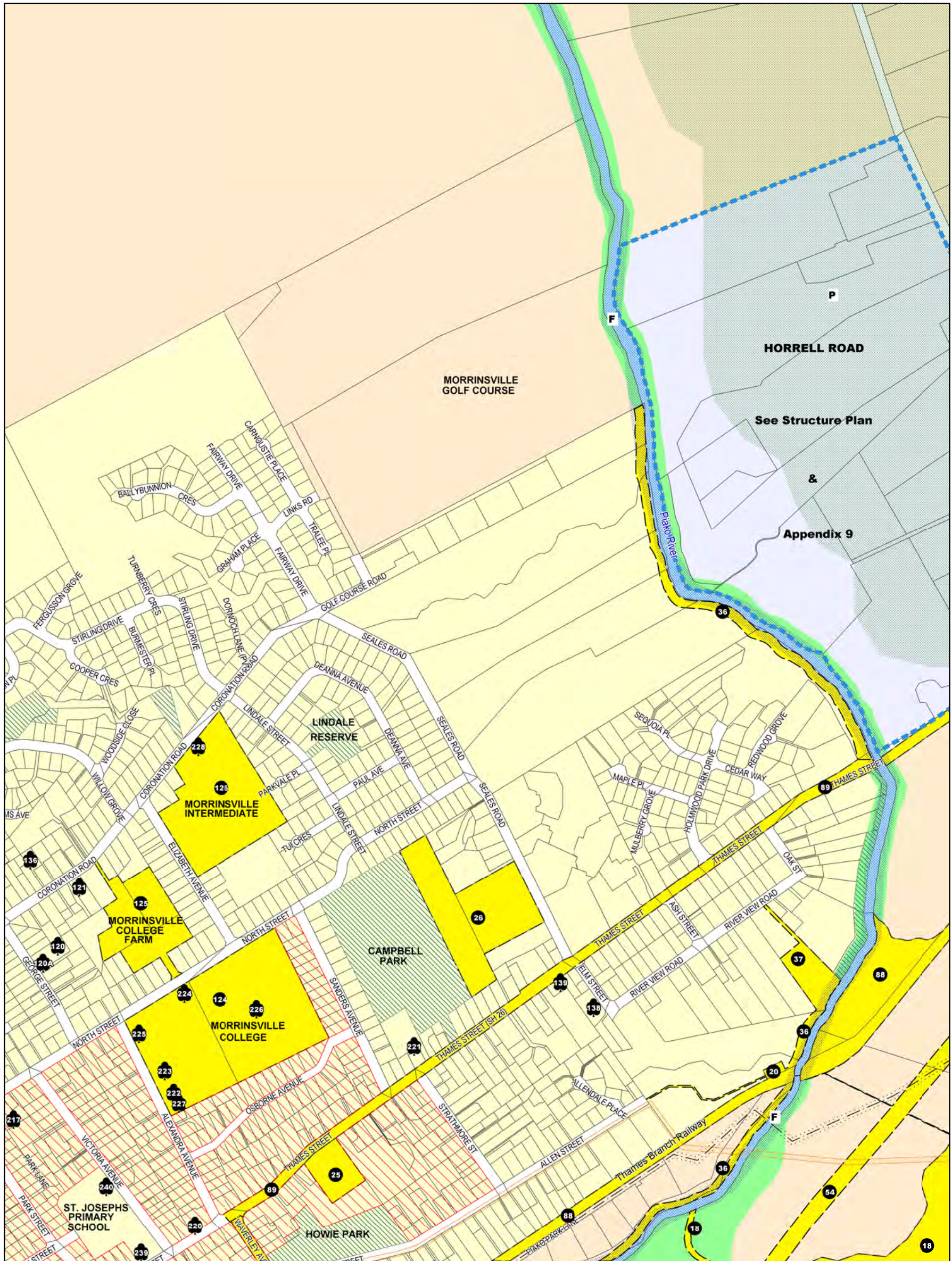
Scale 1:8,000

Version 2 -- Operative 25 July 2005



7	7	27
7	26	27
	28	

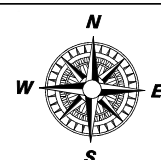




MORRINSVILLE

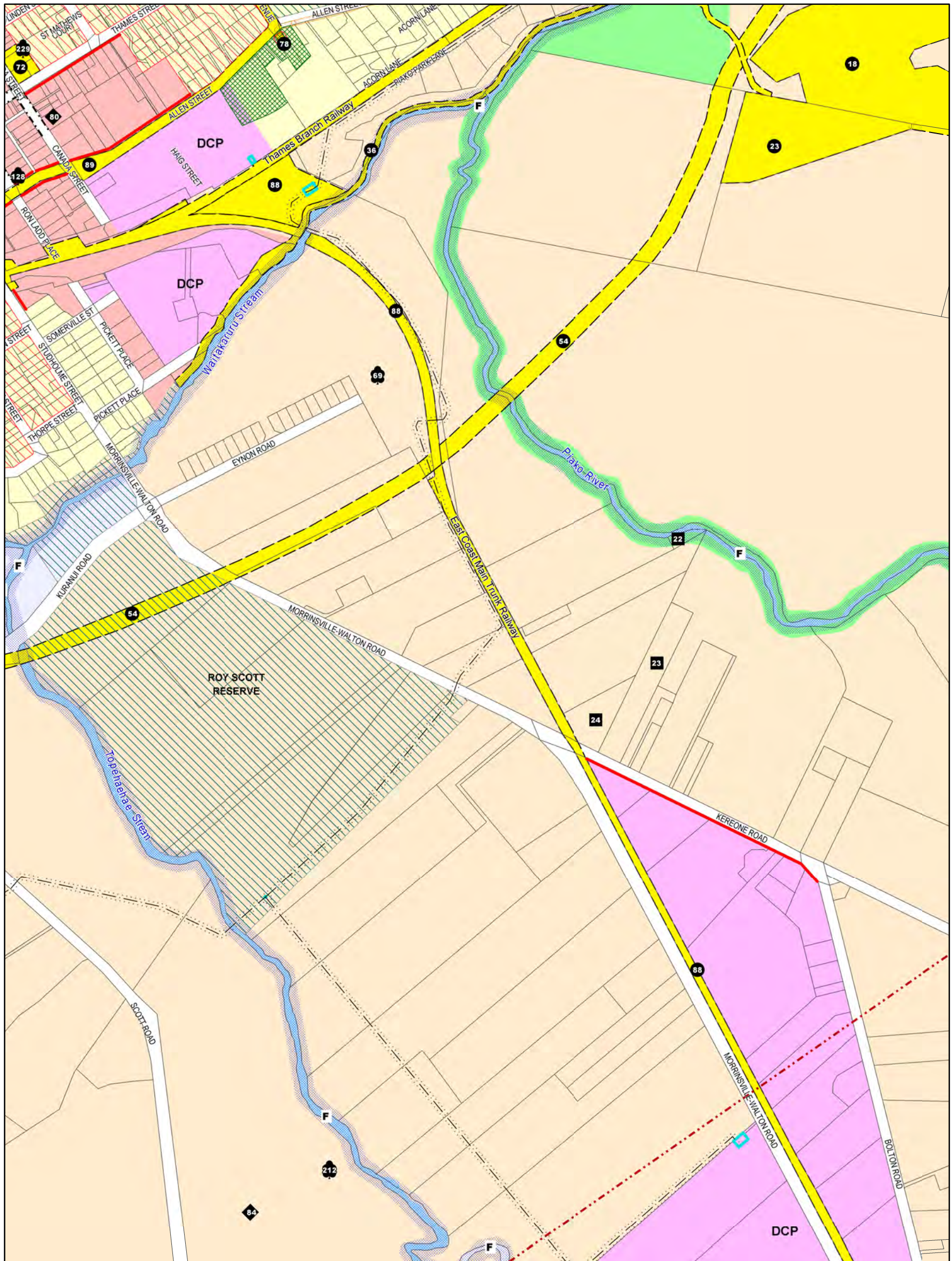
Scale 1:8,000

Version 6 -- Operative 21 October 2015



	7	
26	27	7
	29	

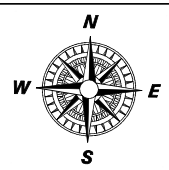




MORRINSVILLE

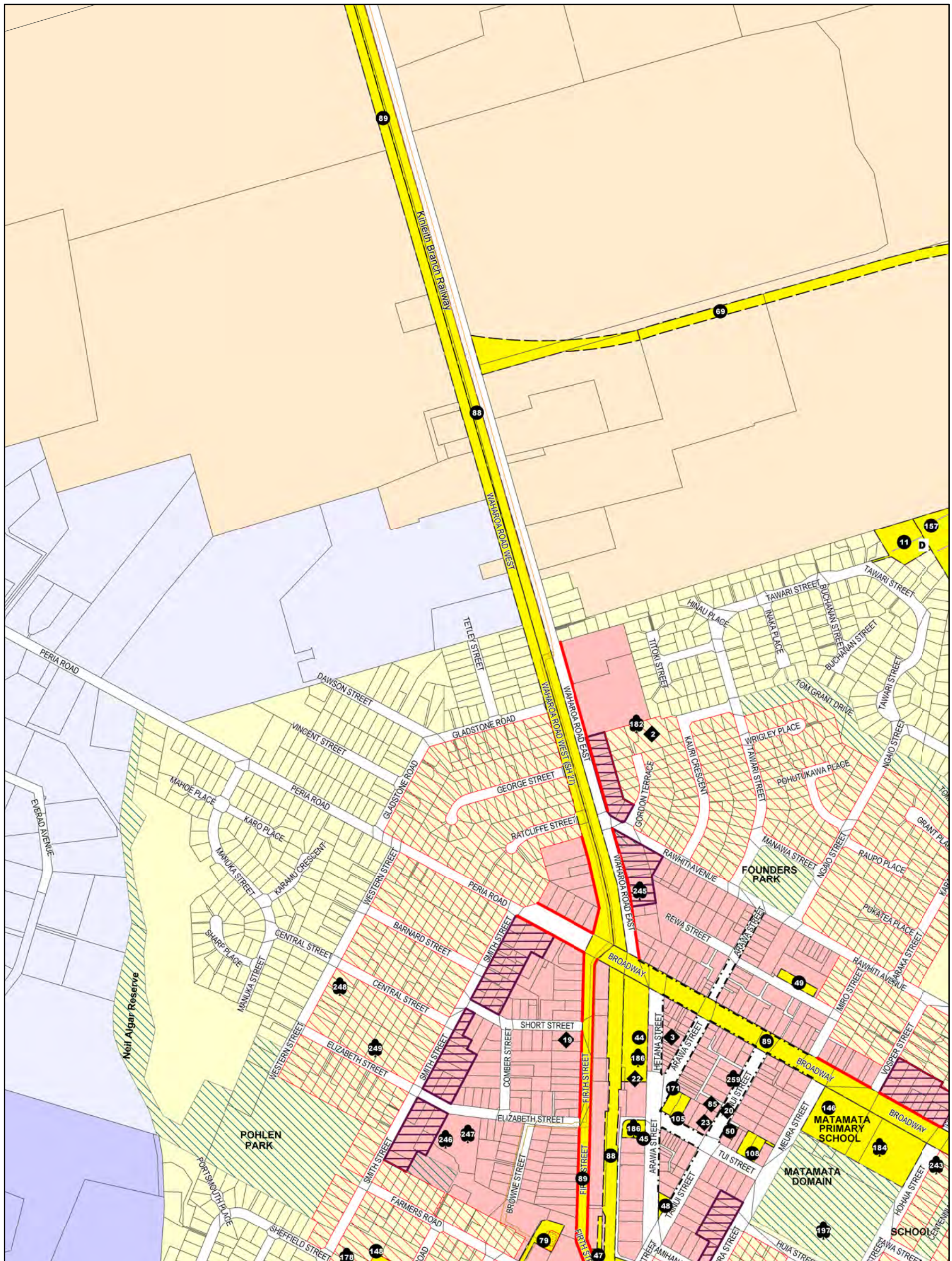
Scale 1:8,000

Version 5 -- Operative 21 October 2015



27	
28	29
30	7

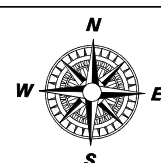




MATAMATA

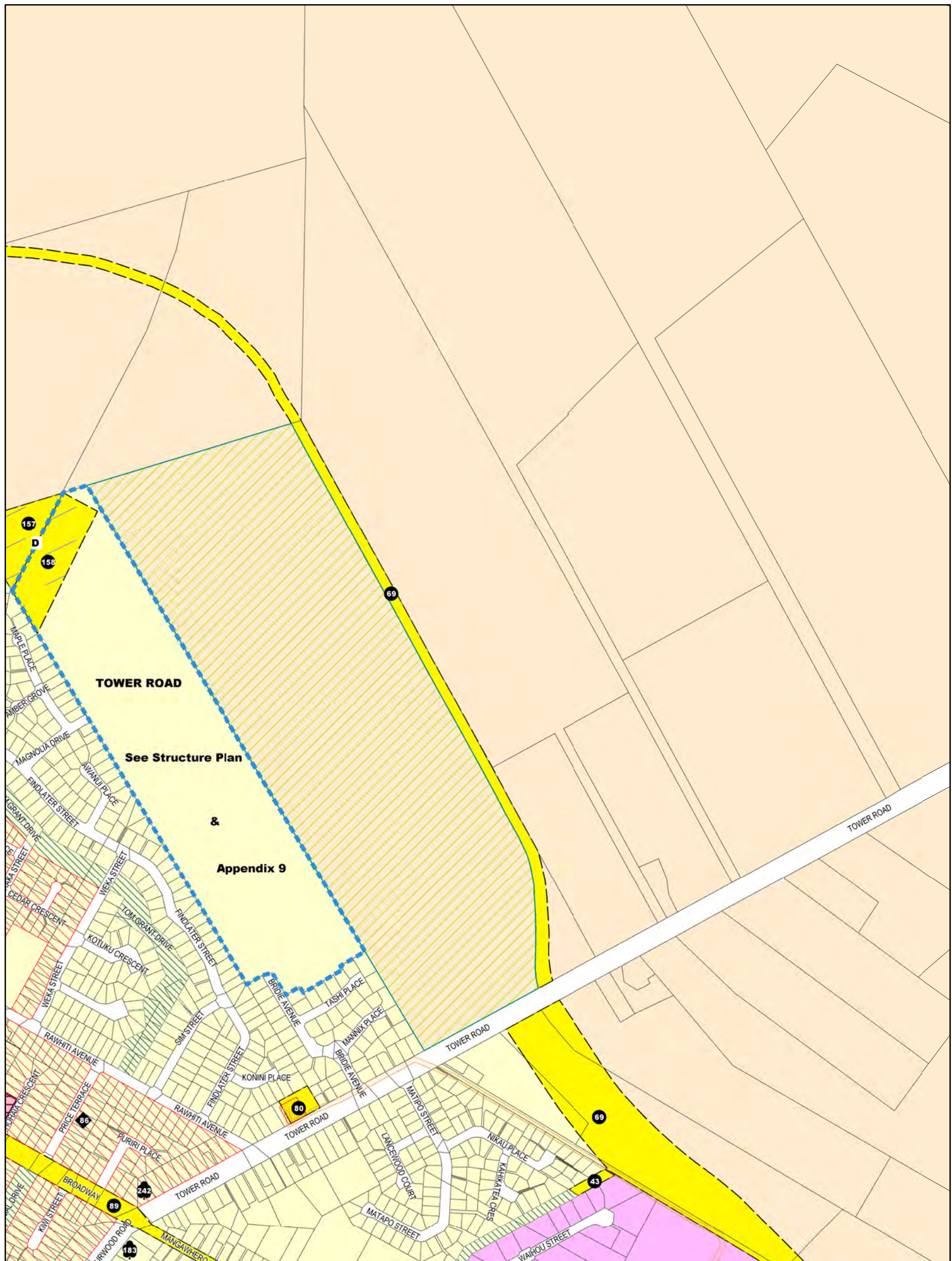
Scale 1:8,000

Version 6 -- Operative 21 October 2015



	14	
14	32	33
	34	

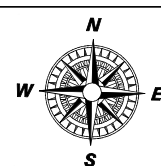




MATAMATA

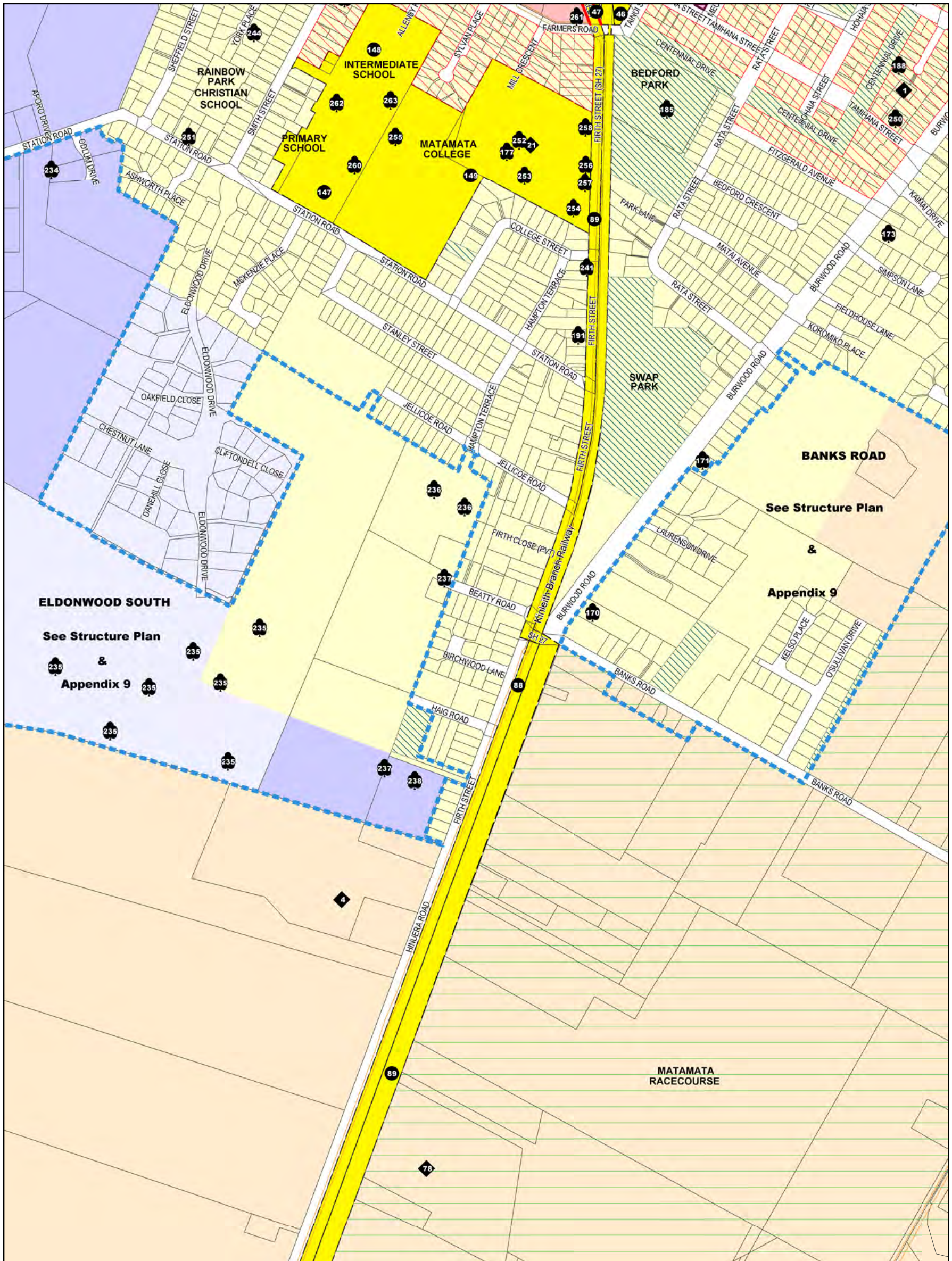
Scale 1:8,000

Version 5 -- Operative 21 October 2015



	14	
32	33	14
	35	

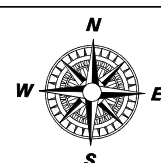




MATAMATA

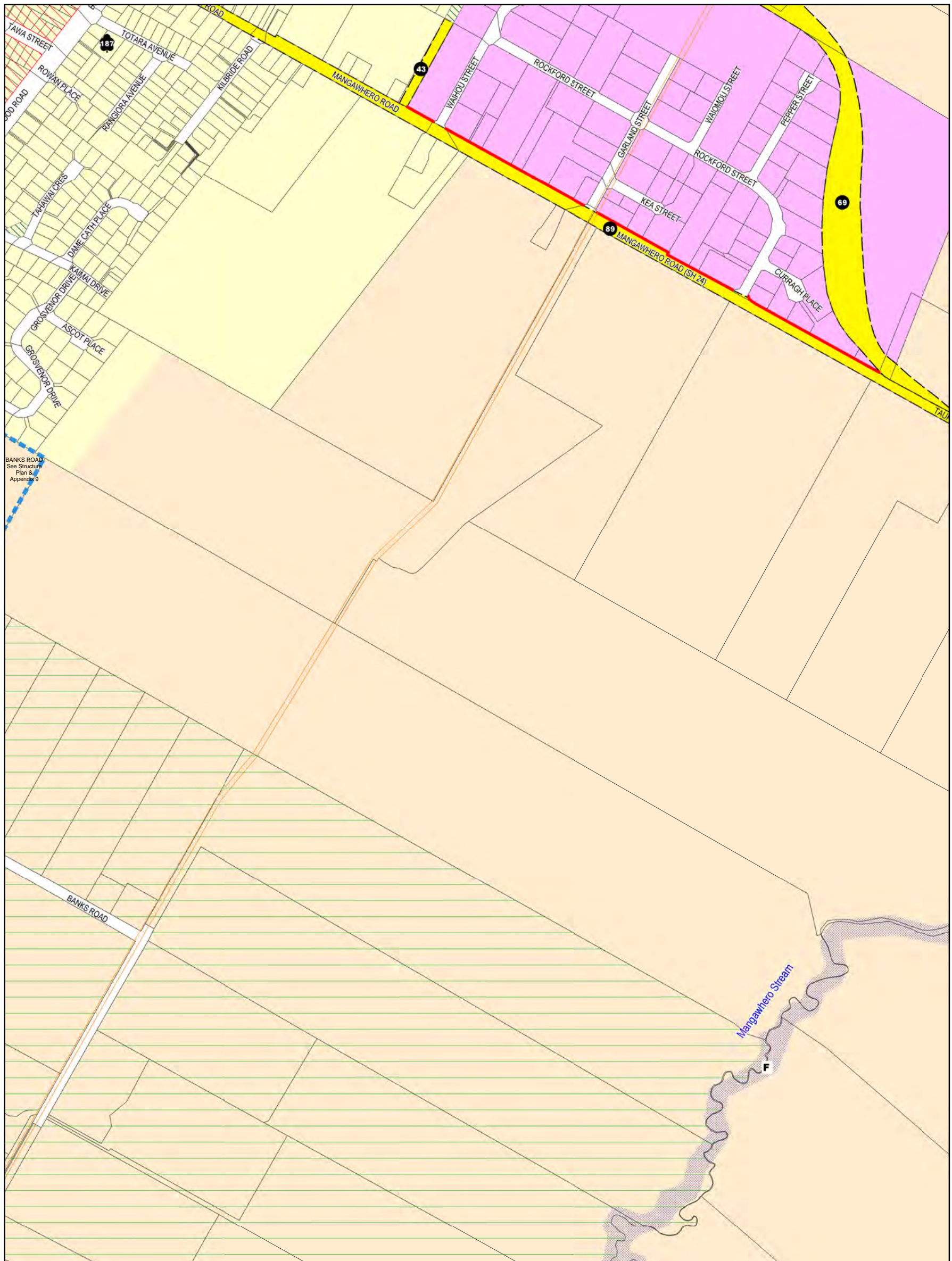
Scale 1:8,000

Version 8 -- Operative 21 October 2015



	32	
14	34	35
	14	

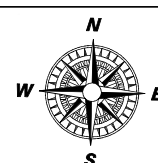




MATAMATA

Scale 1:8,000

Version 8 -- Operative 21 October 2015



	33	
34	35	14
	14	

