



Figure 1 - Te Ohaki Marae, Ngarua urupā block and surrounds



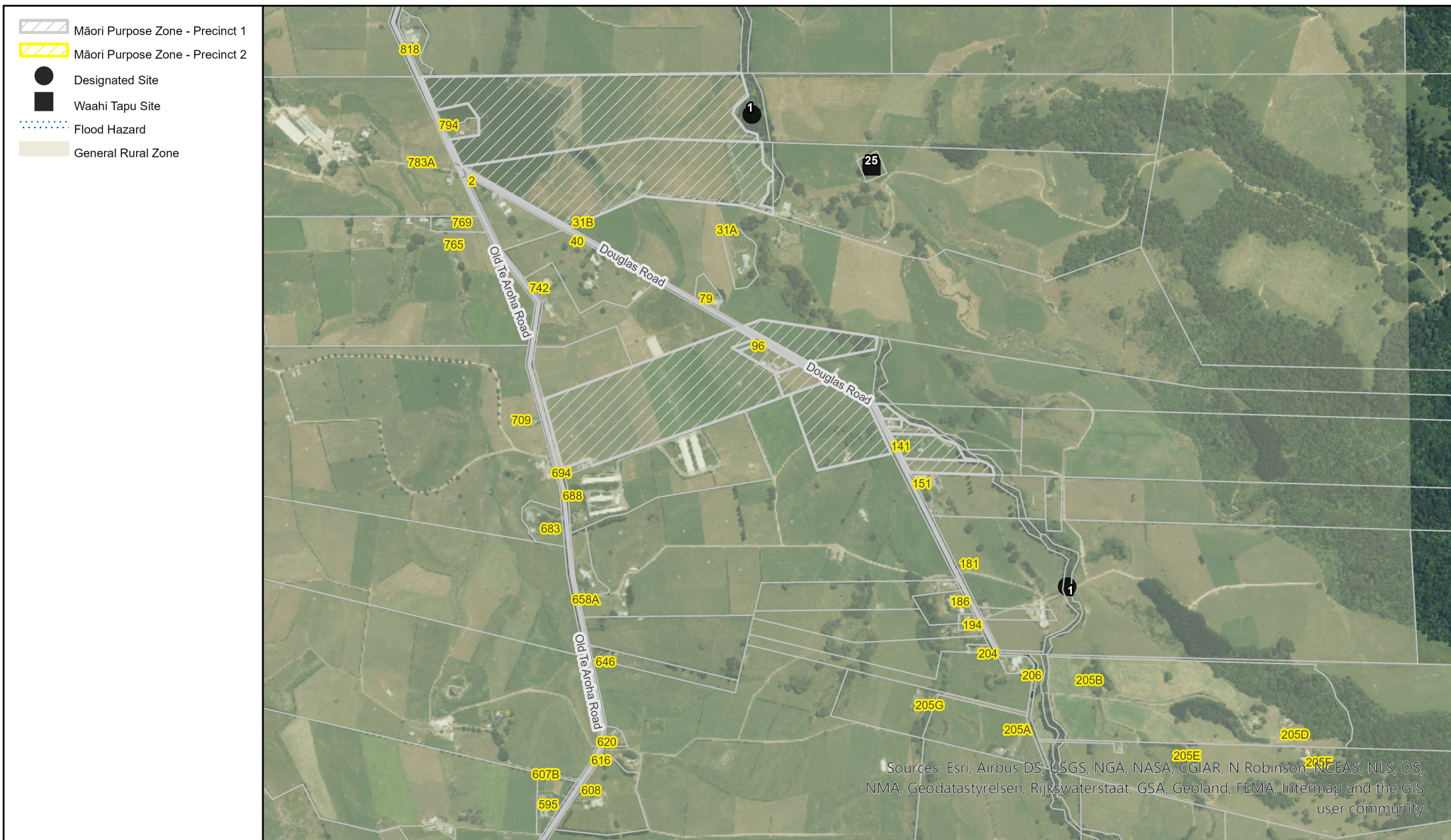


Figure 2 - Douglas Road





Sources: Esri, Airbus DS, USGS, NGA, NASA, CGIAR, N Robinson, NOAA, NLS, OS, NMA, Geodatastyrelsen, Rijkswaterstaat, GSA, Geoland, FEMA, Intermap and the GIS User community



Figure 3A - Flood Risk Modelling Information for land surrounding Waiti Marae

Data is provided as at March 2024 [pursuant to the Local Government Official Information and Meetings Act 1987]. While every effort has been made to ensure accuracy of the data, MPDC cannot guarantee its accuracy or suitability for any specific purpose. MPDC is not responsible for the misuse or misinterpretation of the data supplied. Under no circumstances shall MPDC be liable for any actions taken or omissions made from reliance on any information contained herein from whatever source nor shall the MPDC be liable for any other consequences from any such reliance.
Copyright © 2024 Matamata-Piako District Council. Cadastral information derived from Land Information NZ Crown copyright reserved.

March 15, 2024



0 315 630 Meters





Figure 4 - Okauia 2E3B Block near Te Omeka Marae



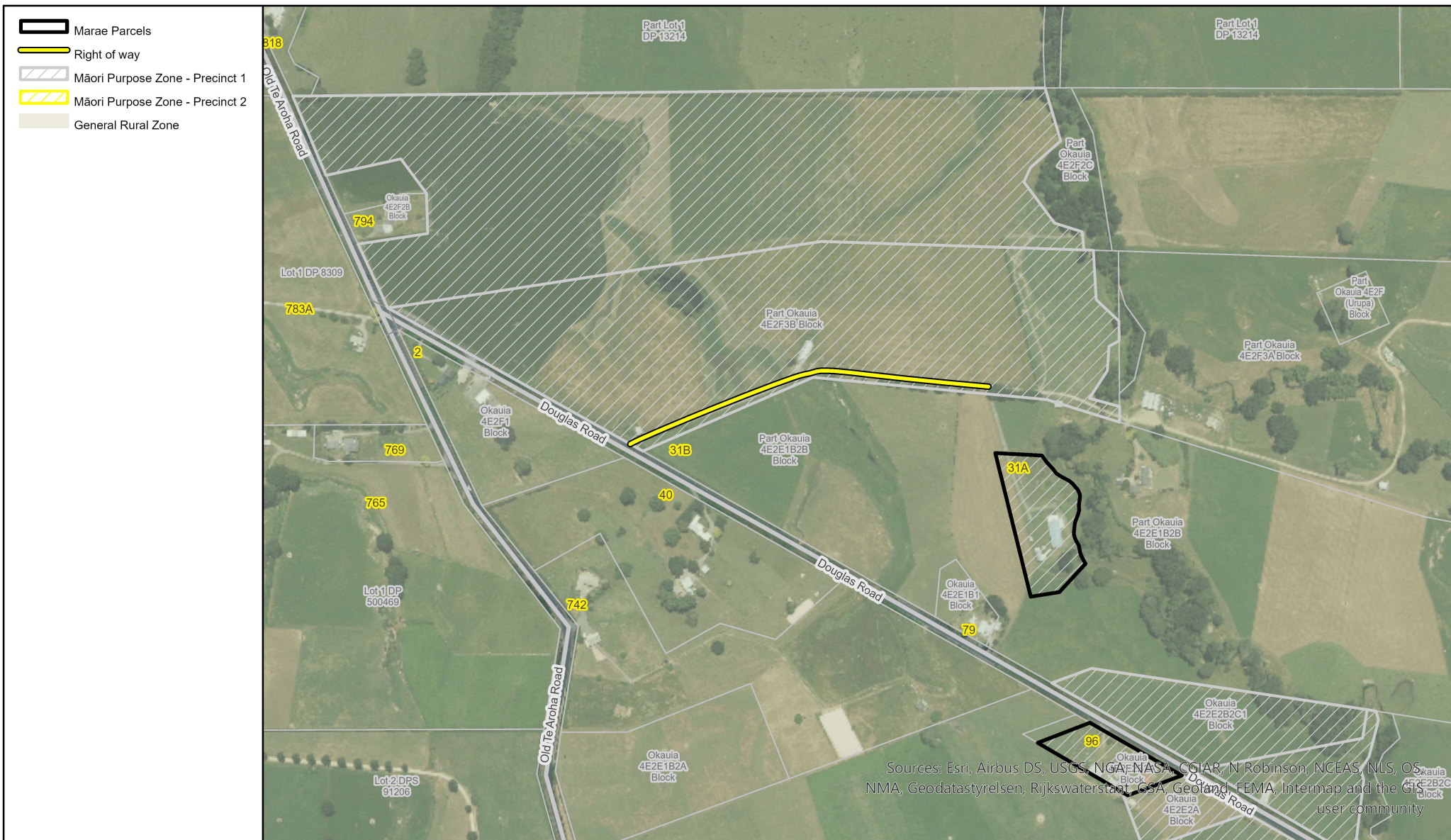


Figure 5 - Access arrangement for Te Ohaki Marae



