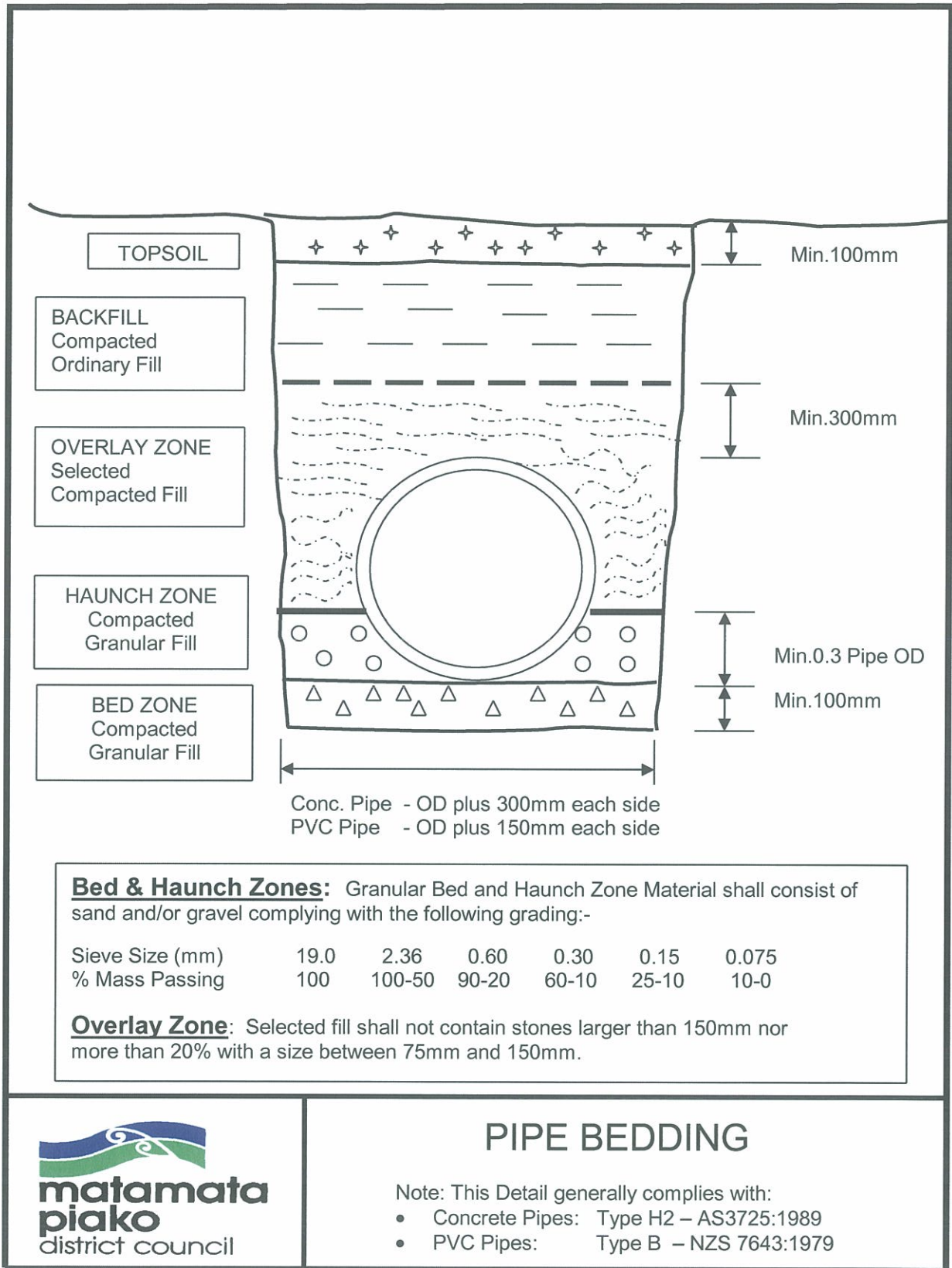
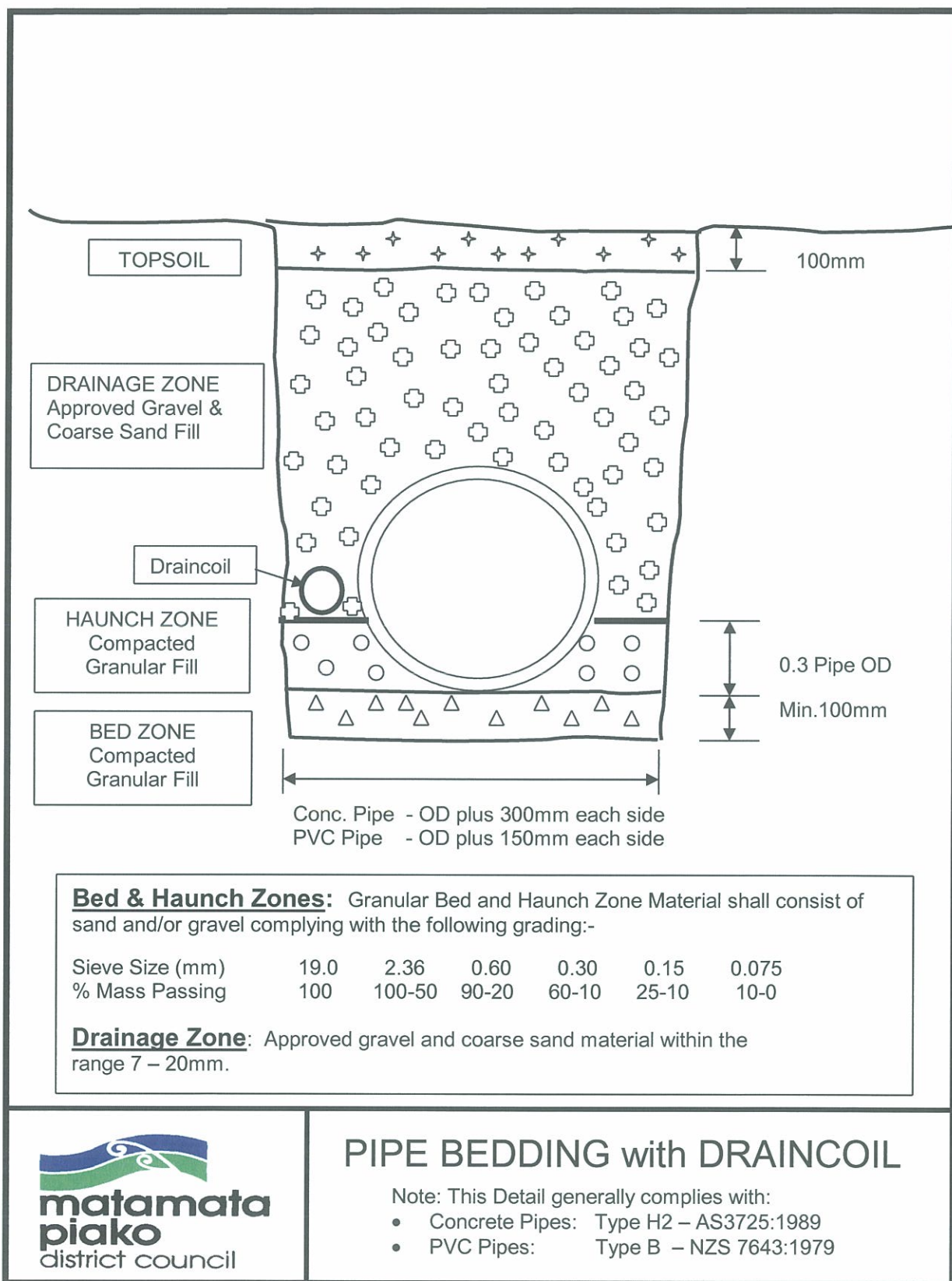


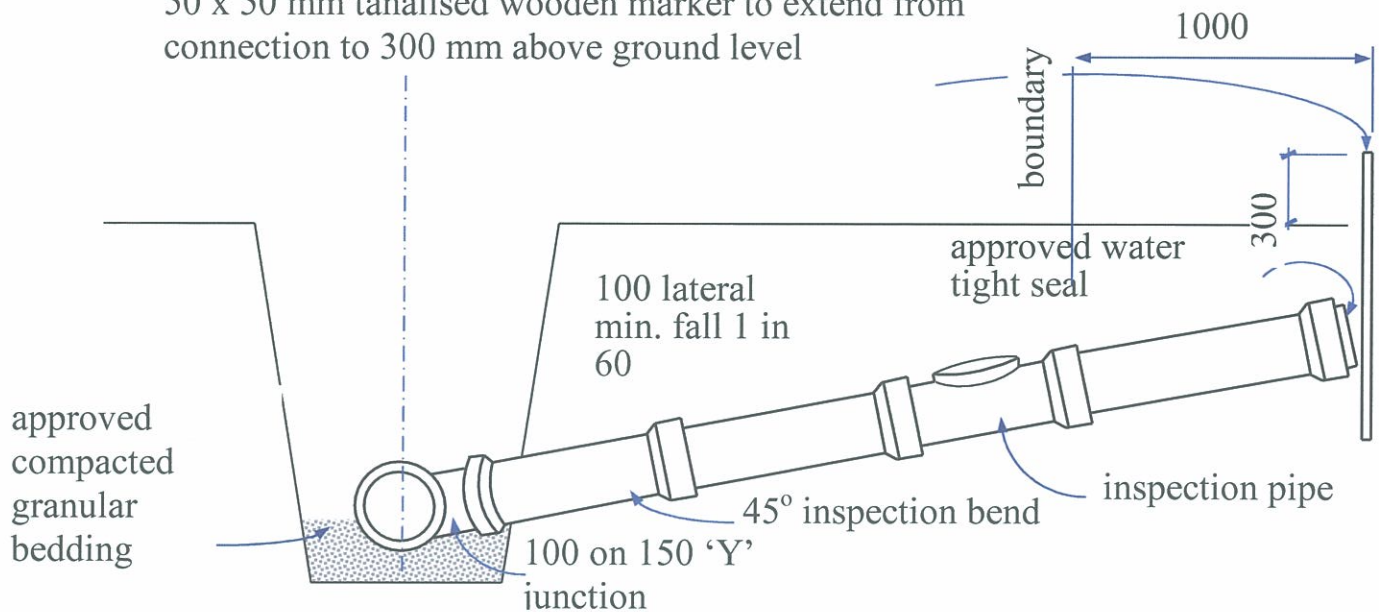
# Standard Details and Drawings



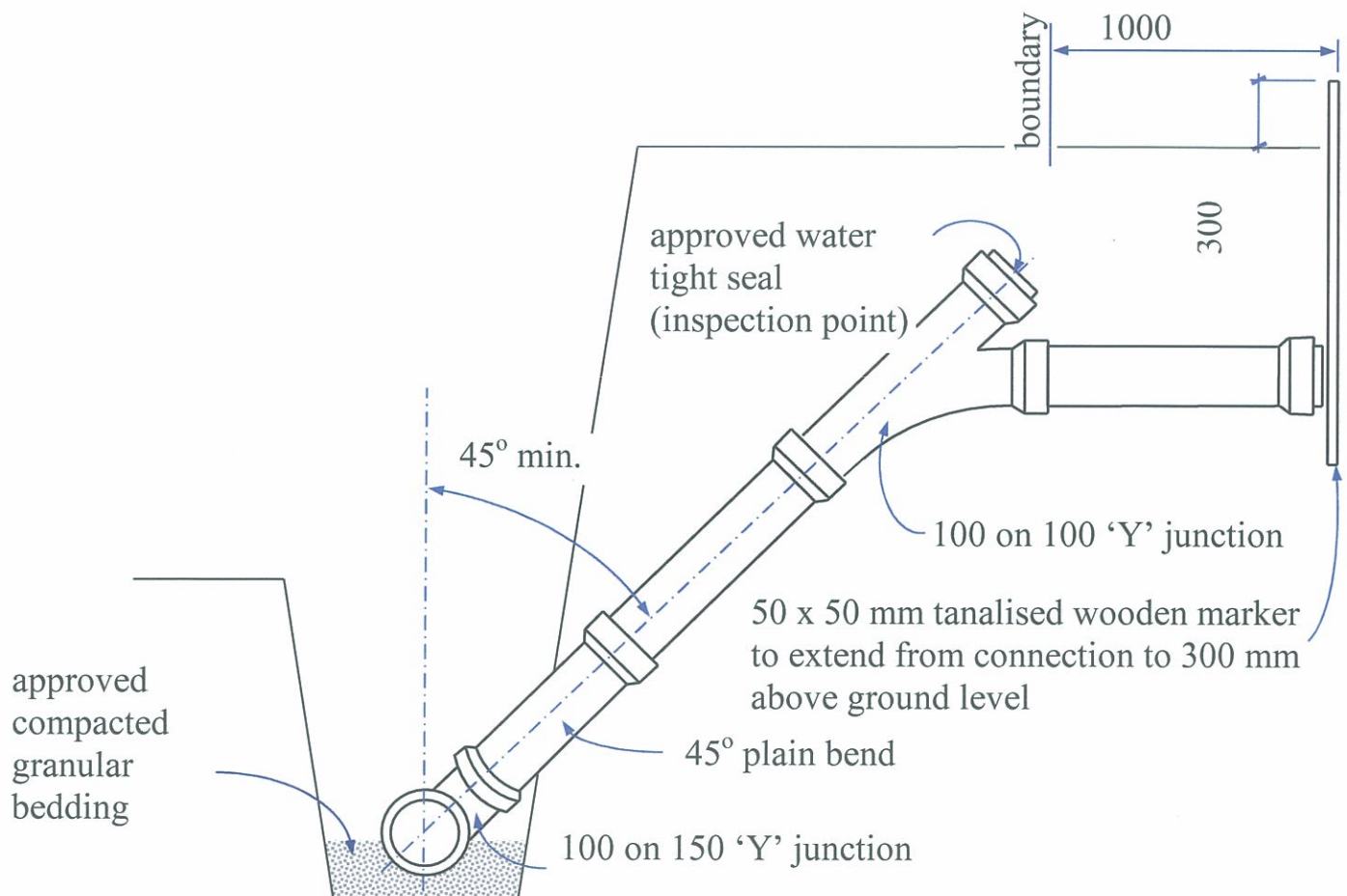
## Standard Details and Drawings



50 x 50 mm tanalised wooden marker to extend from connection to 300 mm above ground level



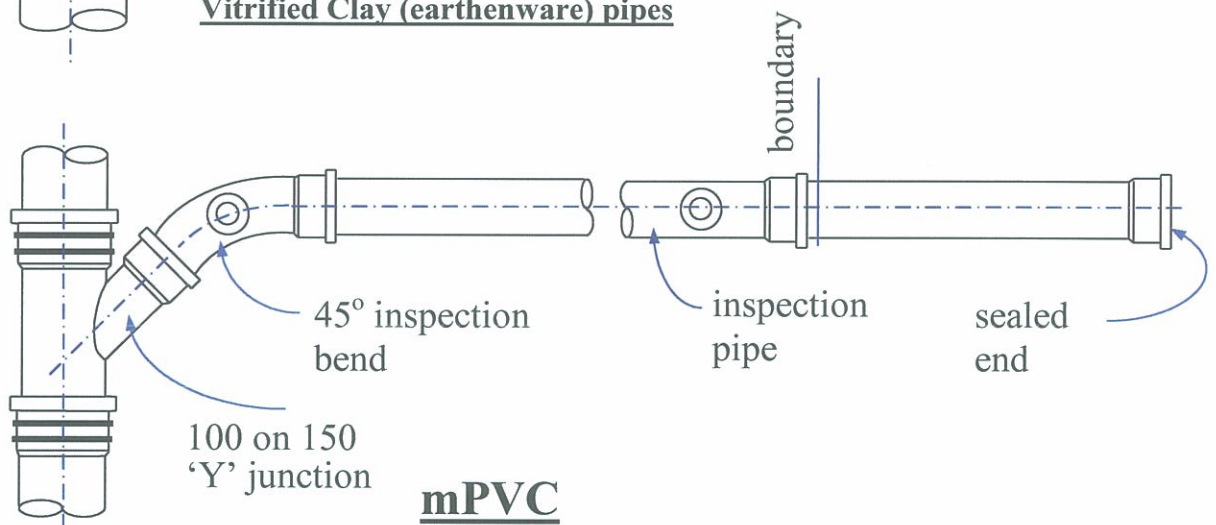
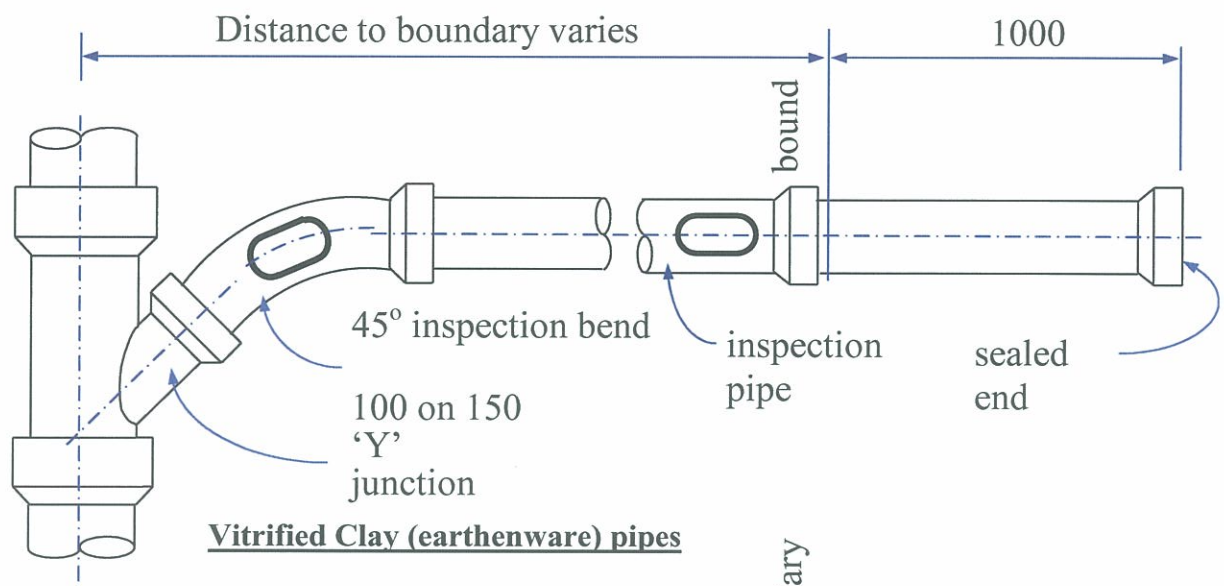
### STANDARD CONNECTION FOR SEWERS WHERE INVERT DEPTH < 2.50m



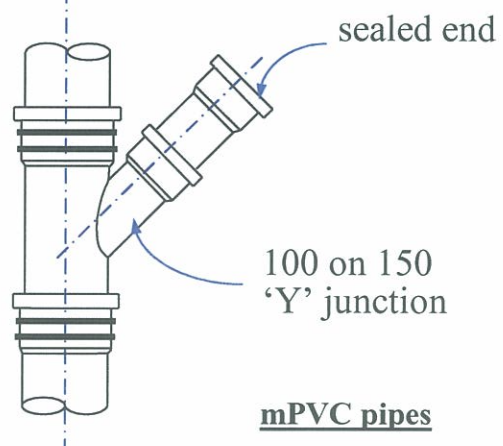
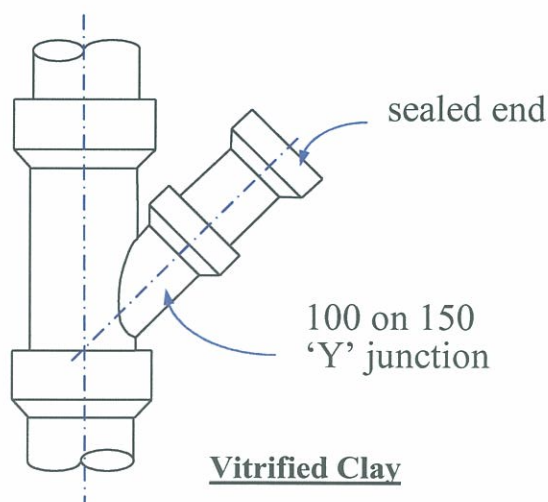
### RAMPED RISER CONNECTION FOR SEWERS WHERE INVERT DEPTH > 2.50m



# Standard Details and Drawings

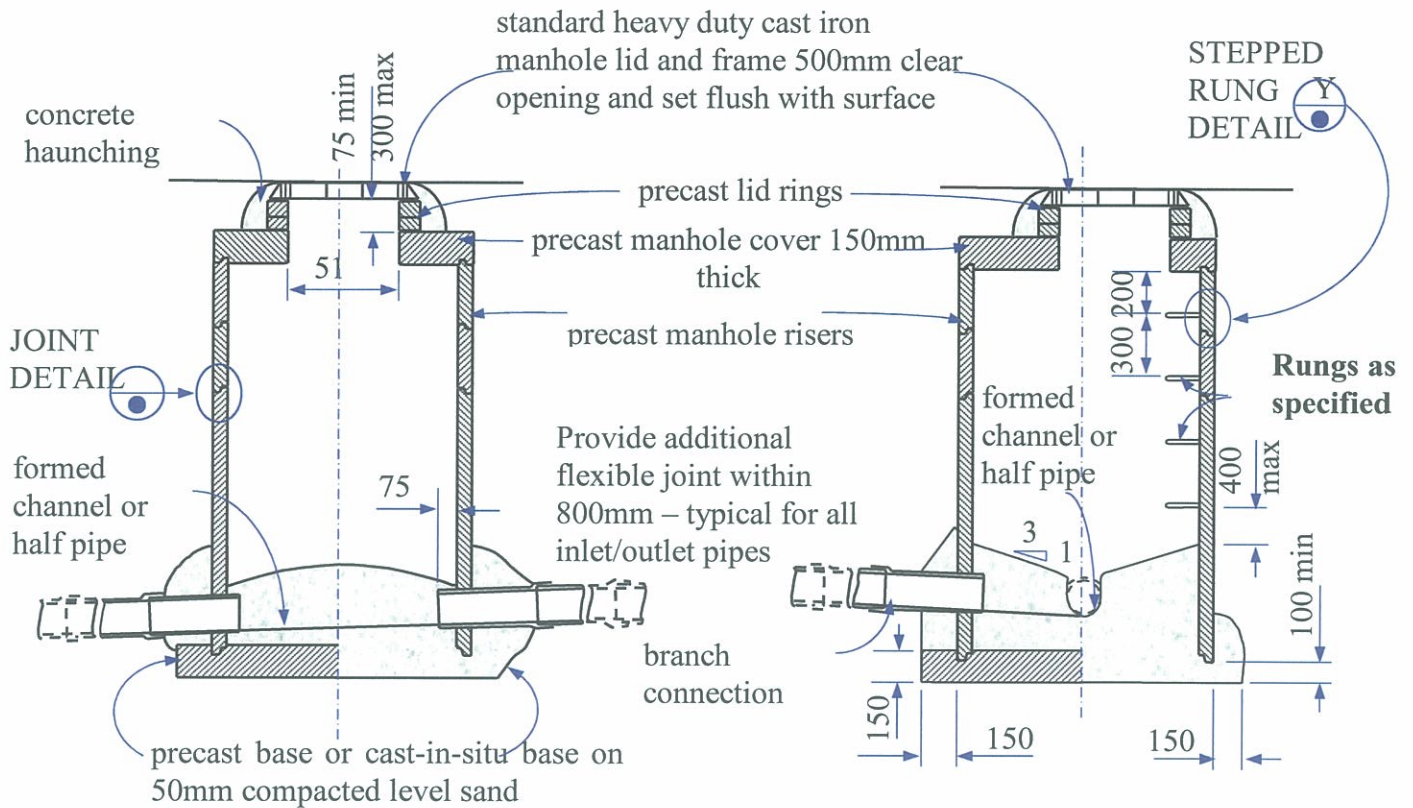


## CONNECTIONS WHERE SEWER IS OUTSIDE BOUNDARY



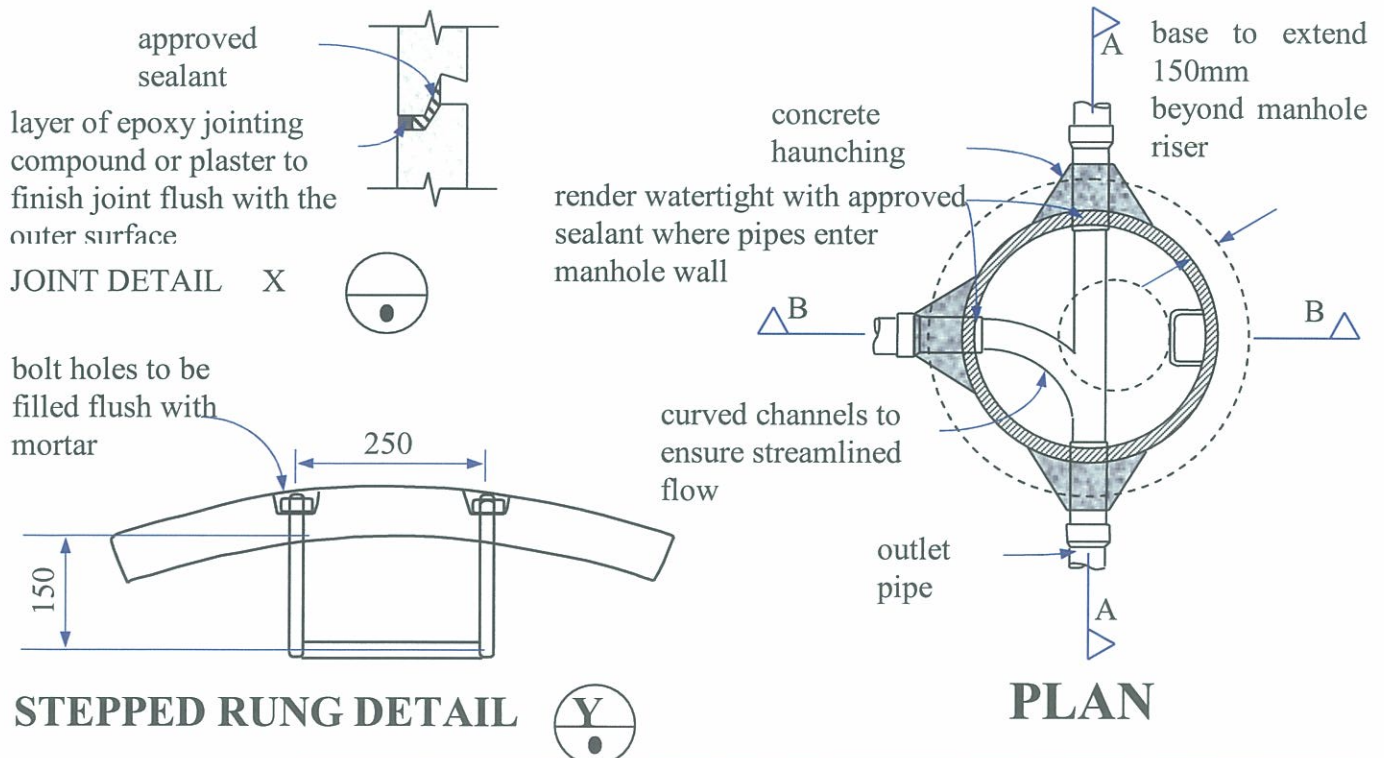
## CONNECTIONS WHERE SEWER IS INSIDE BOUNDARY

# Standard Details and Drawings



SECTION A-A

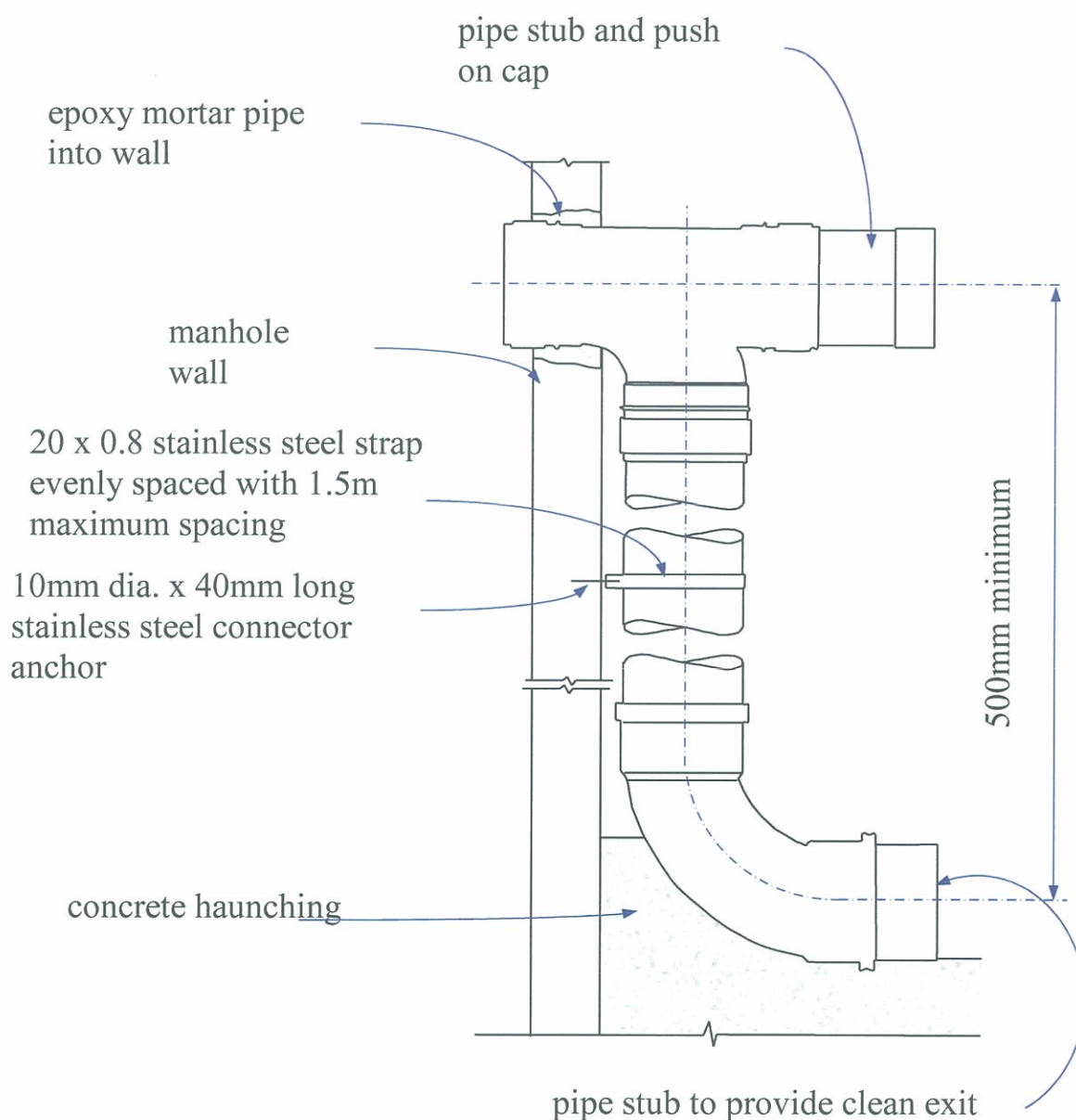
SECTION B-B



STEPPED RUNG DETAIL

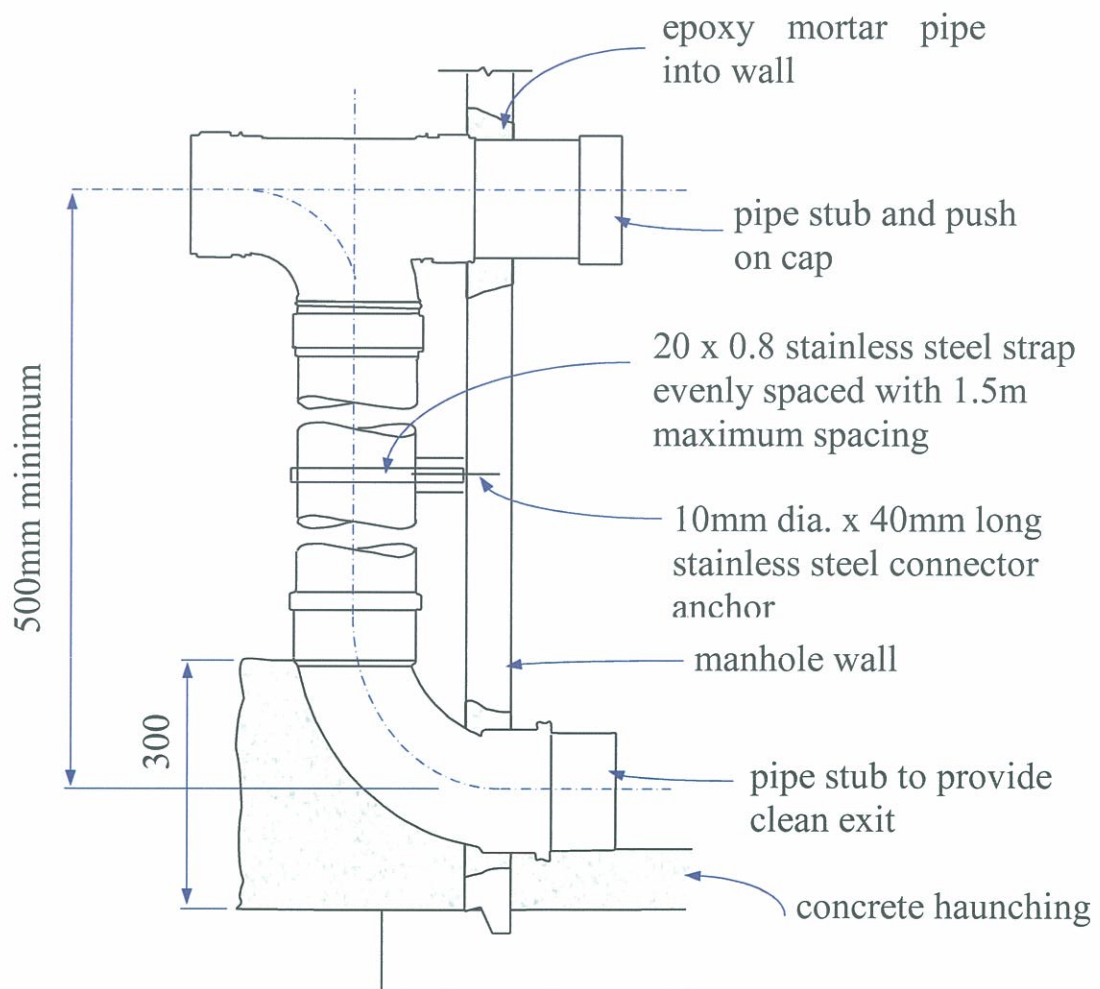
PLAN

## Standard Details and Drawings

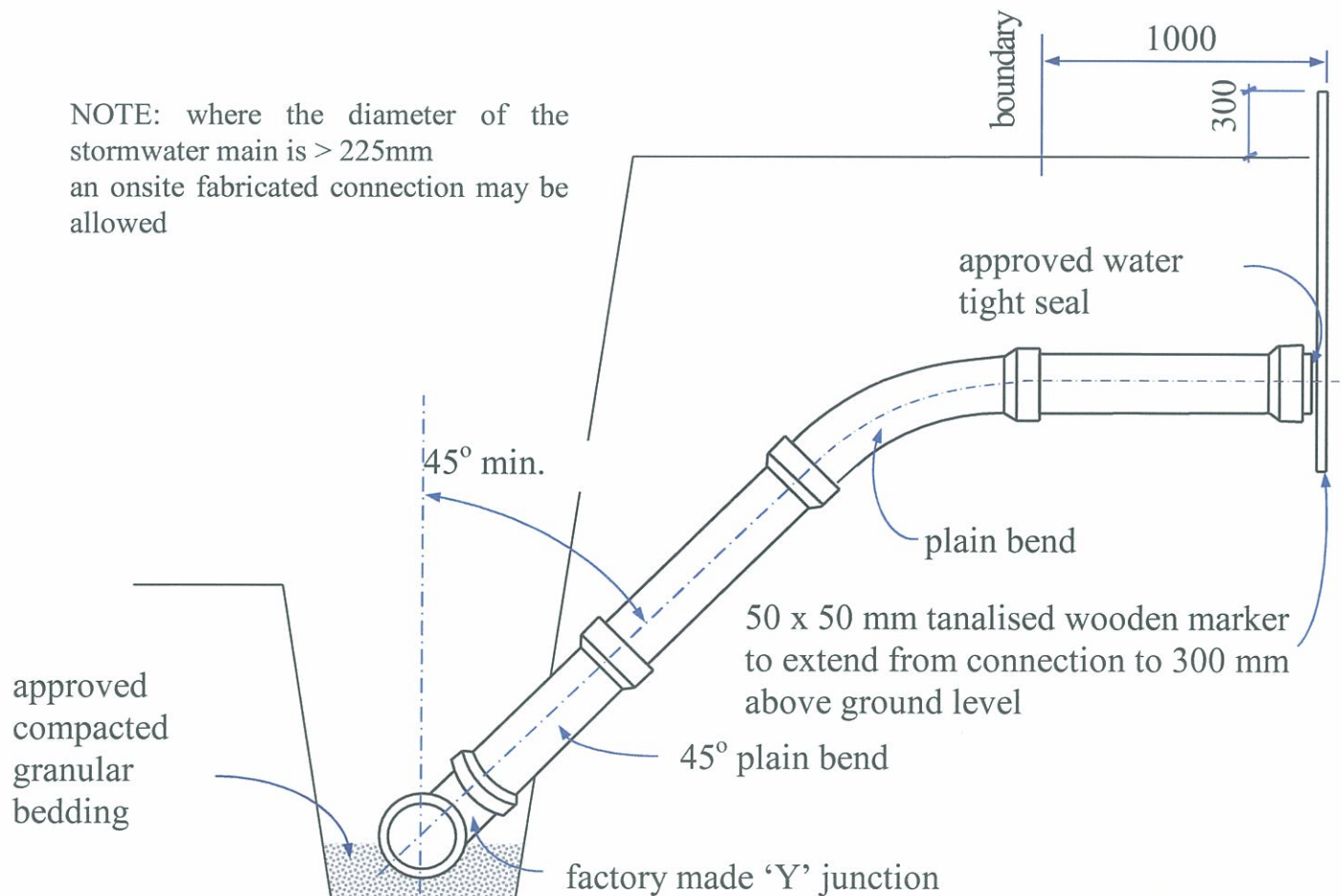
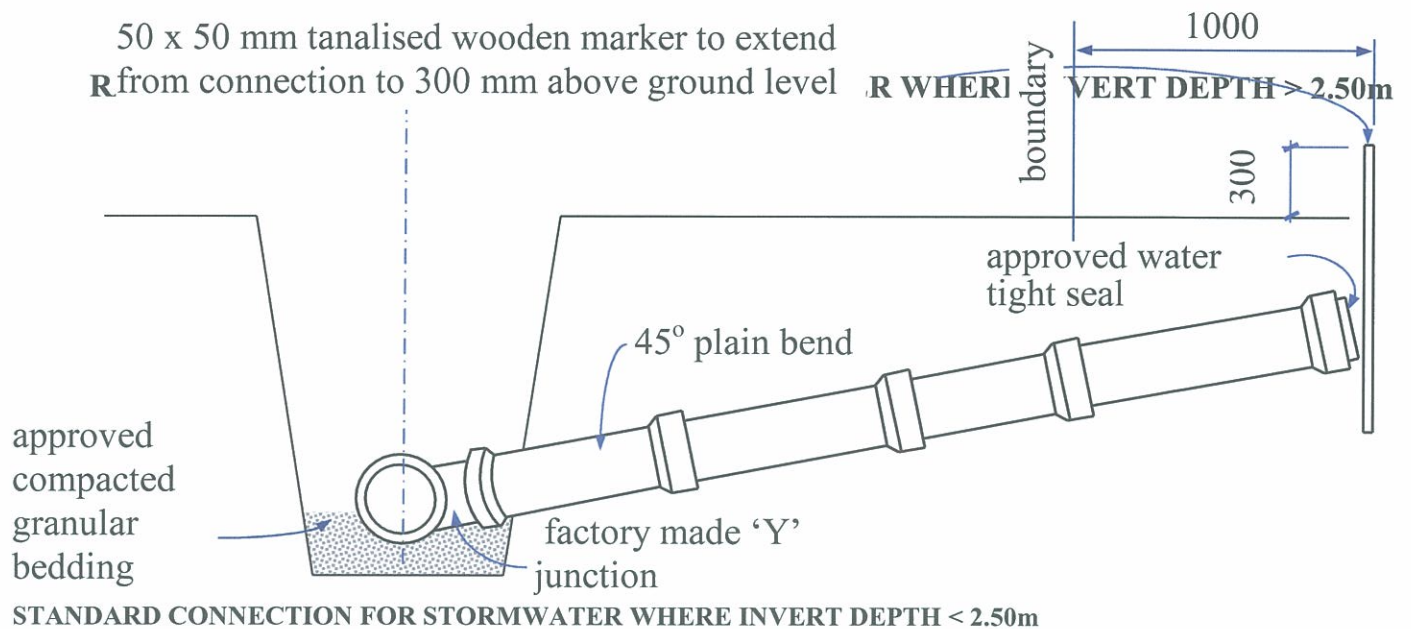




## Standard Details and Drawings

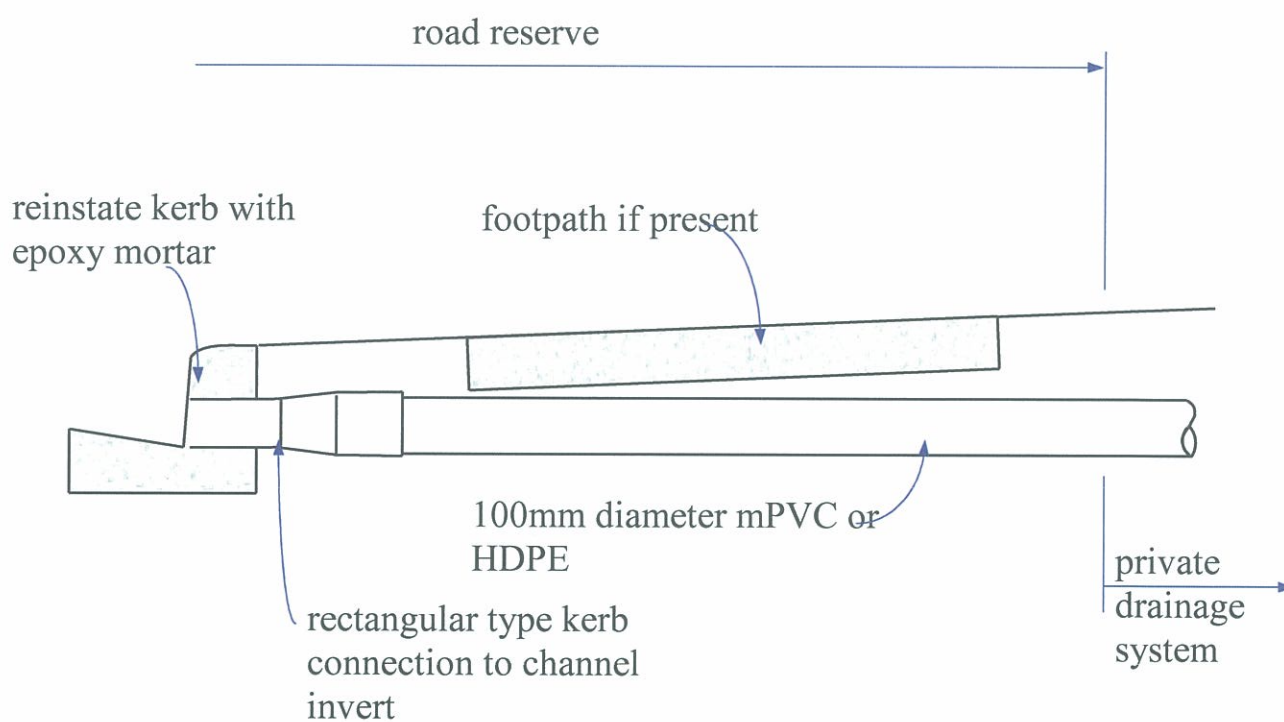


## Standard Details and Drawings



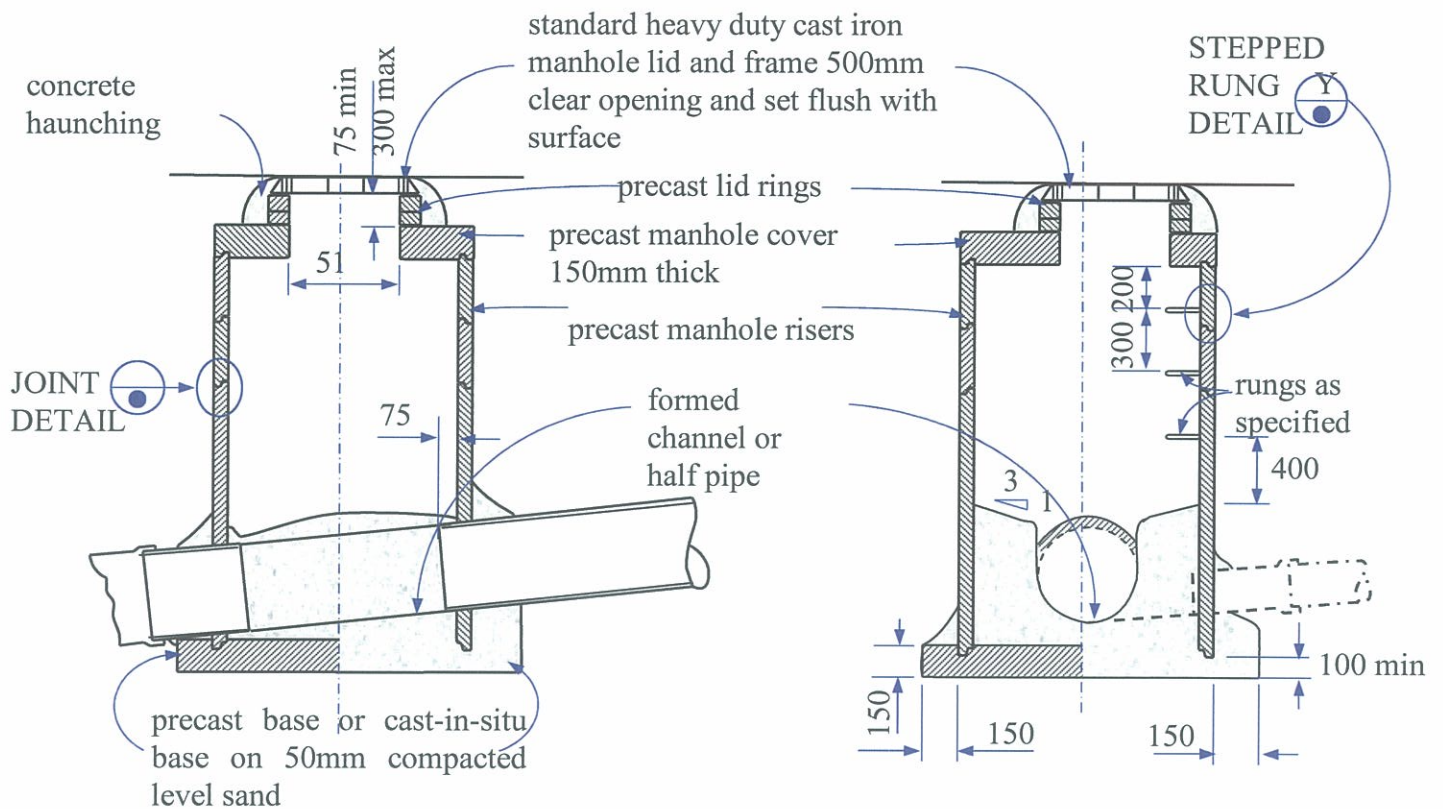


## Standard Details and Drawings



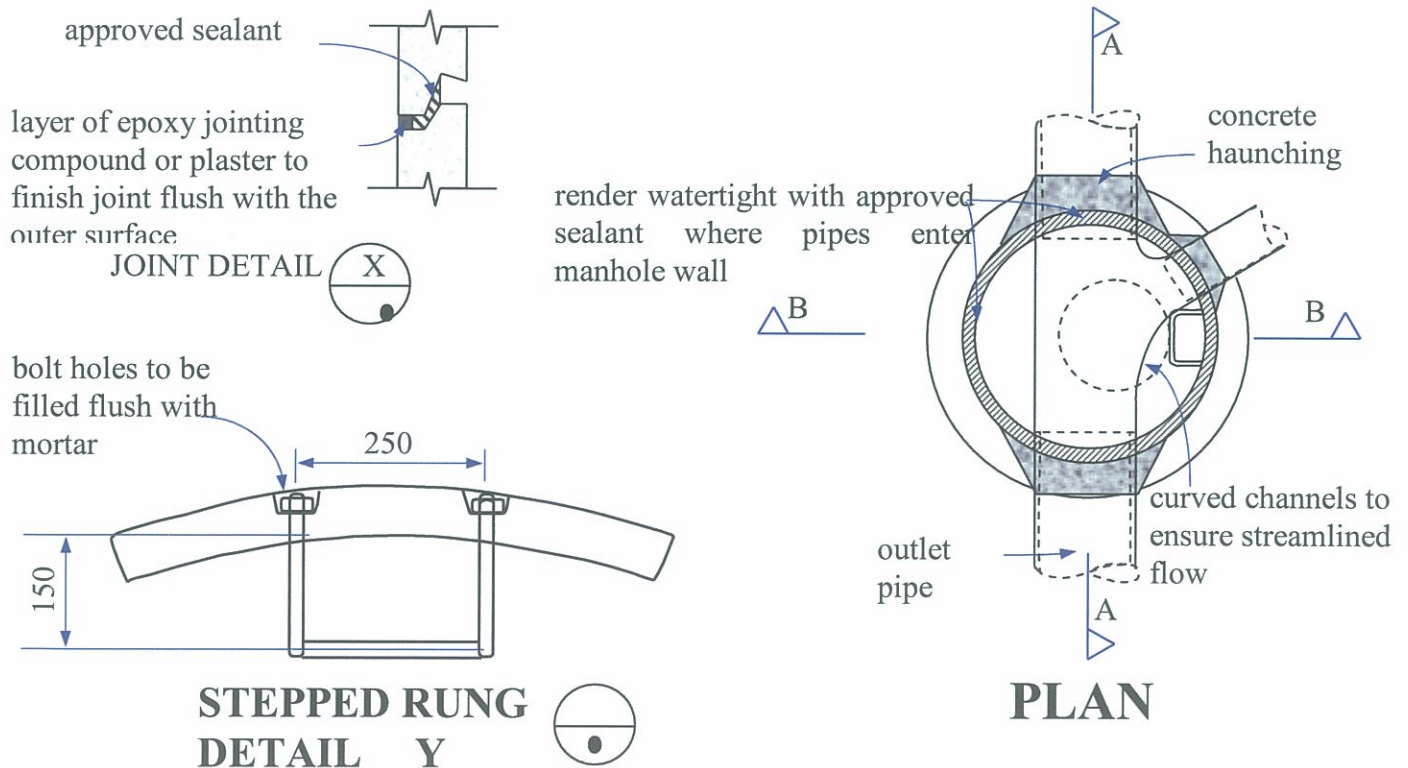
**NOTE:** specific permission must be obtained for kerb discharge – generally kerb discharge will not be allowed where mountable kerb and channel is used decisions will be made on a site by site basis

# Standard Details and Drawings



SECTION A-A

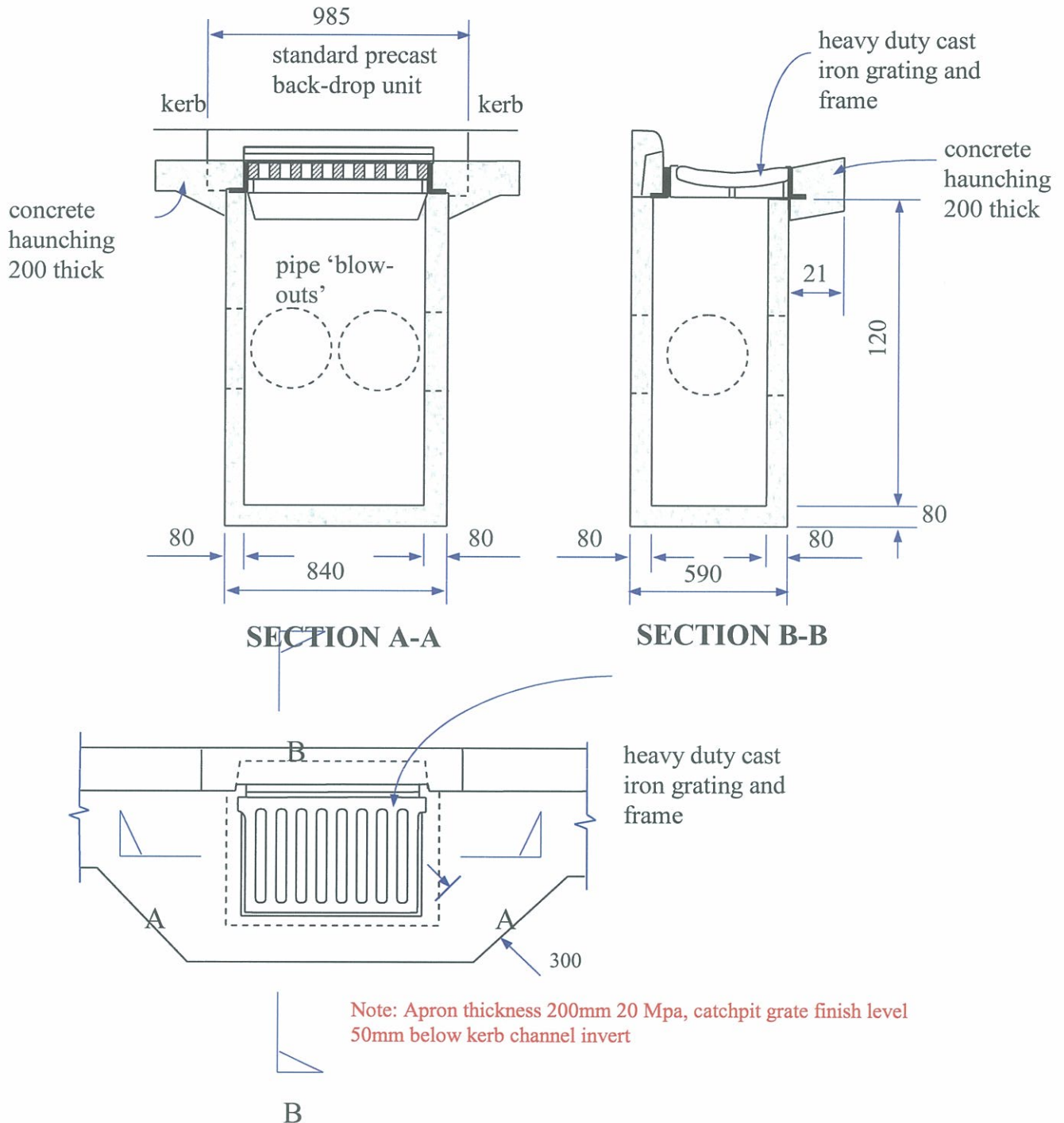
SECTION B-B



STEPPED RUNG  
DETAIL Y

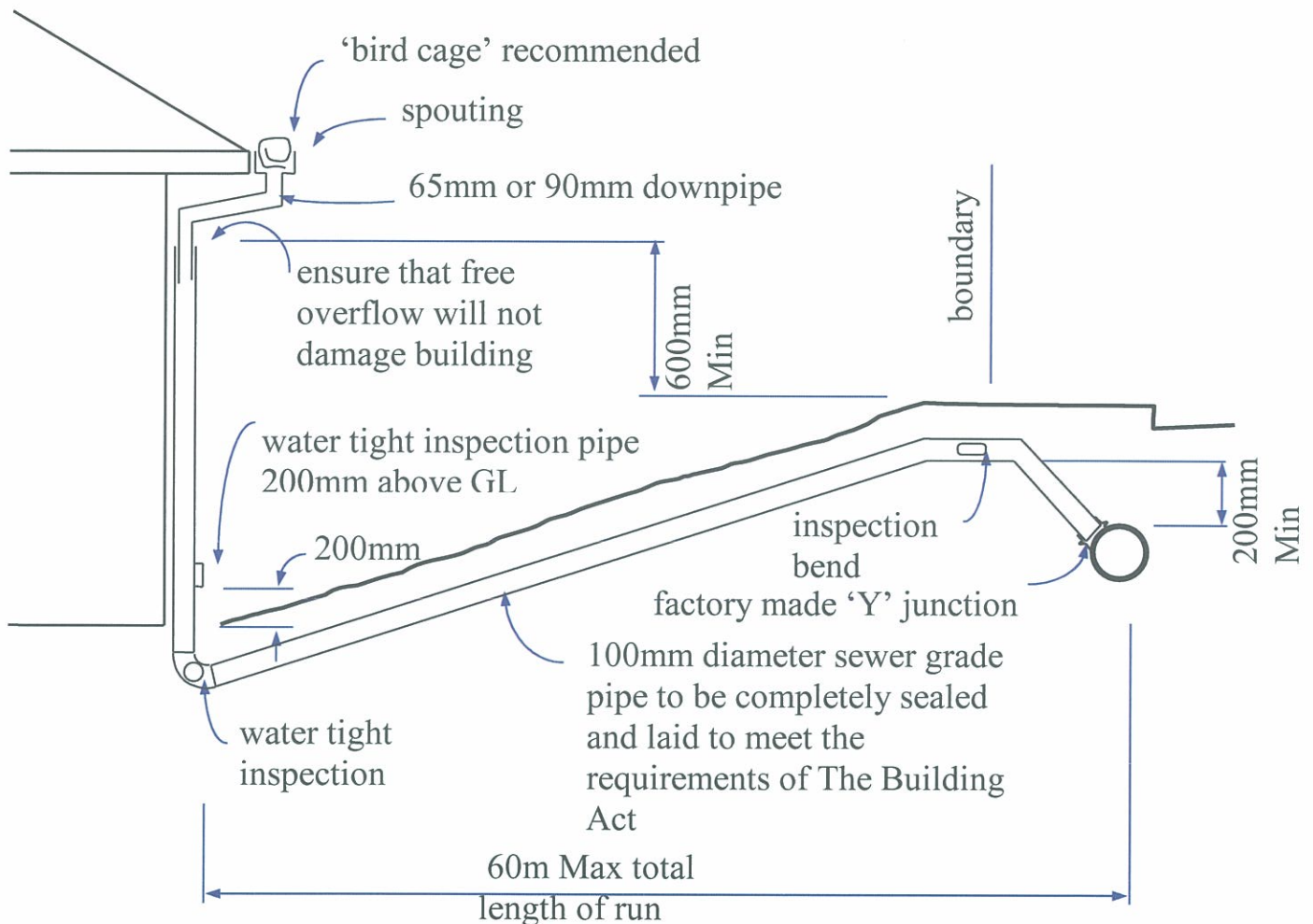
PLAN

# Standard Details and Drawings





## Standard Details and Drawings



NOTE: discharge to the road channel will be considered if it is not possible to reach a public stormwater line

## Standard Details and Drawings

