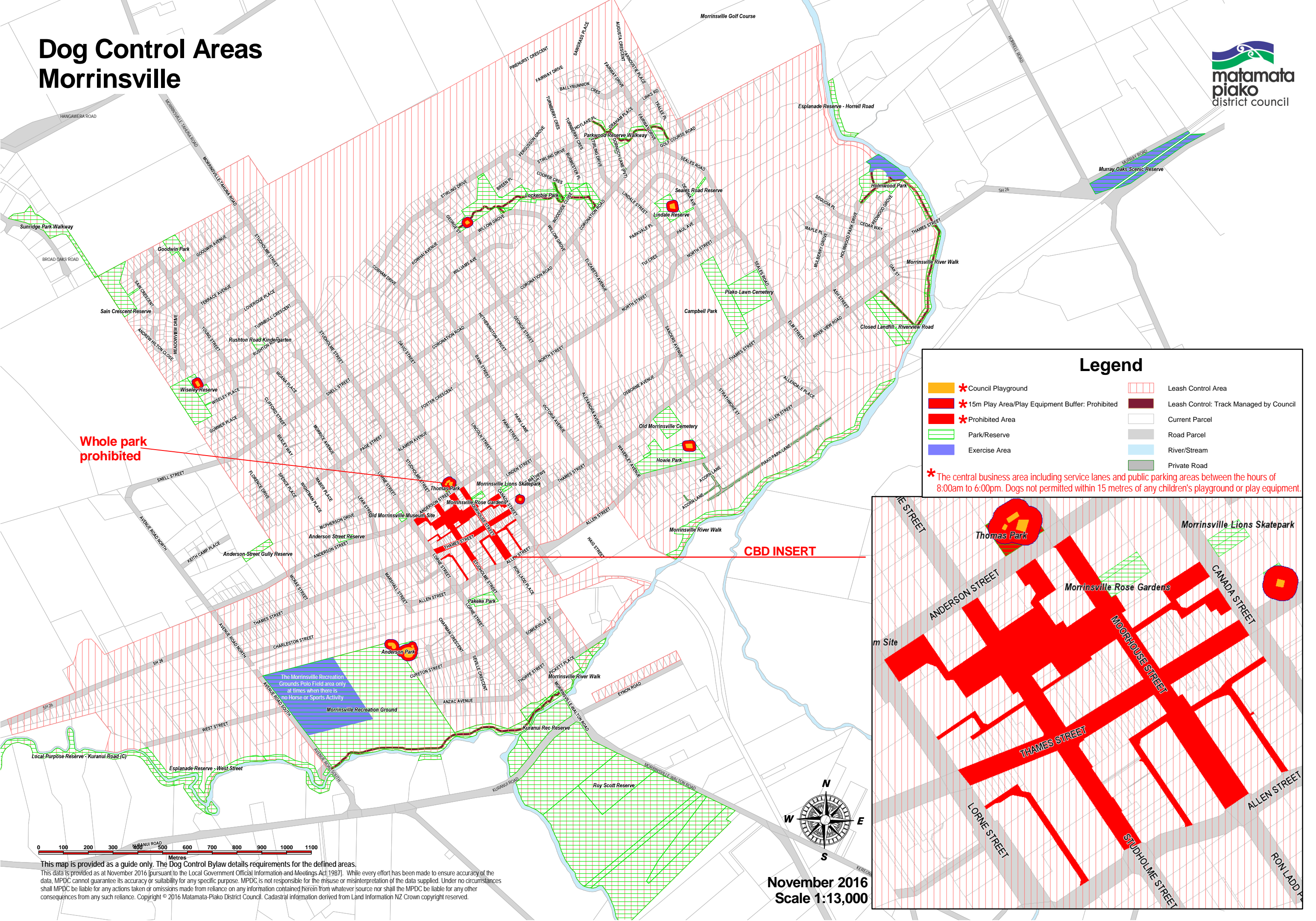


Dog Control Areas Morrinsville



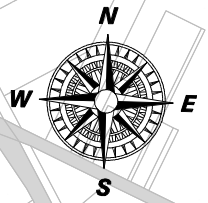
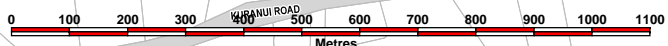
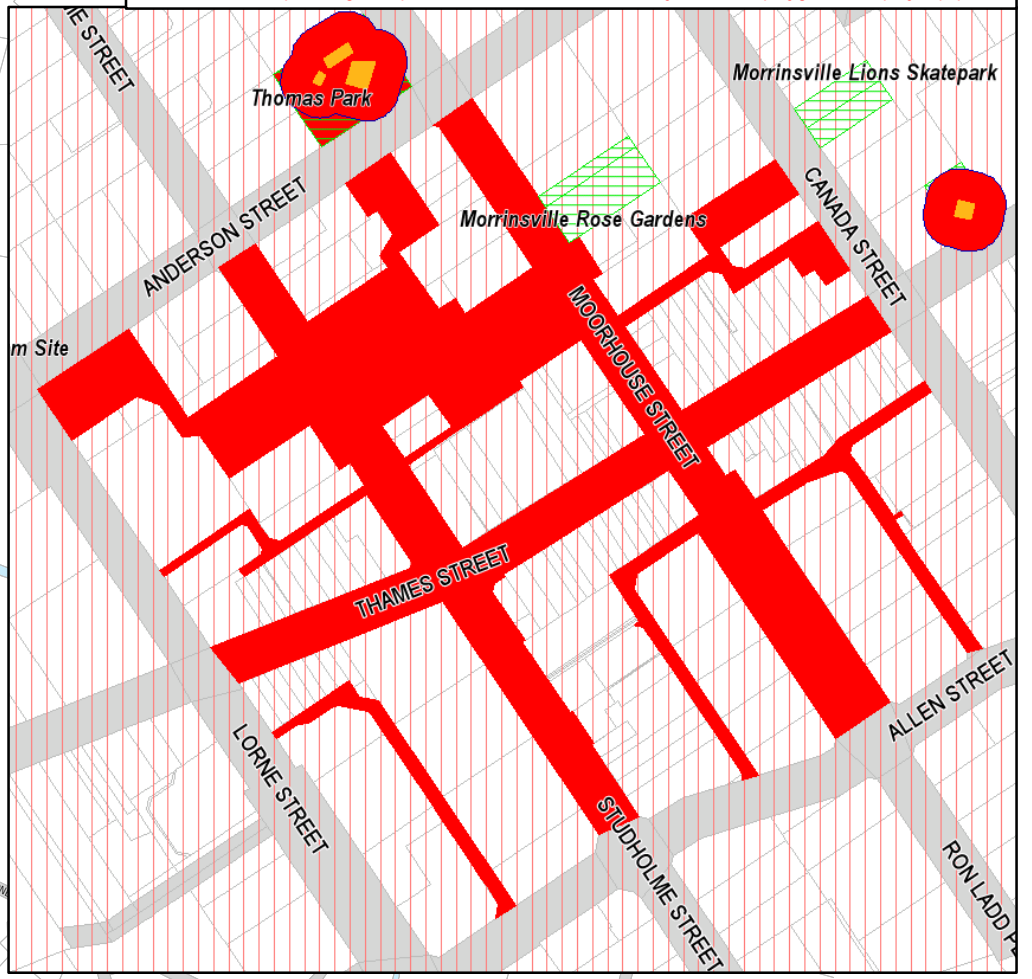
Whole park prohibited

CBD INSERT

Legend

	Council Playground		Leash Control Area
	15m Play Area/Play Equipment Buffer: Prohibited		Leash Control: Track Managed by Council
	Prohibited Area		Current Parcel
	Park/Reserve		Road Parcel
	Exercise Area		River/Stream
			Private Road

* The central business area including service lanes and public parking areas between the hours of 8:00am to 6:00pm. Dogs not permitted within 15 metres of any children's playground or play equipment.



This map is provided as a guide only. The Dog Control Bylaw details requirements for the defined areas. This data is provided as at November 2016 [pursuant to the Local Government Official Information and Meetings Act 1987]. While every effort has been made to ensure accuracy of the data, MPDC cannot guarantee its accuracy or suitability for any specific purpose. MPDC is not responsible for the misuse or misinterpretation of the data supplied. Under no circumstances shall MPDC be liable for any actions taken or omissions made from reliance on any information contained herein from whatever source nor shall the MPDC be liable for any other consequences from any such reliance. Copyright © 2016 Matamata-Piako District Council. Cadastral information derived from Land Information NZ Crown copyright reserved.

November 2016
Scale 1:13,000