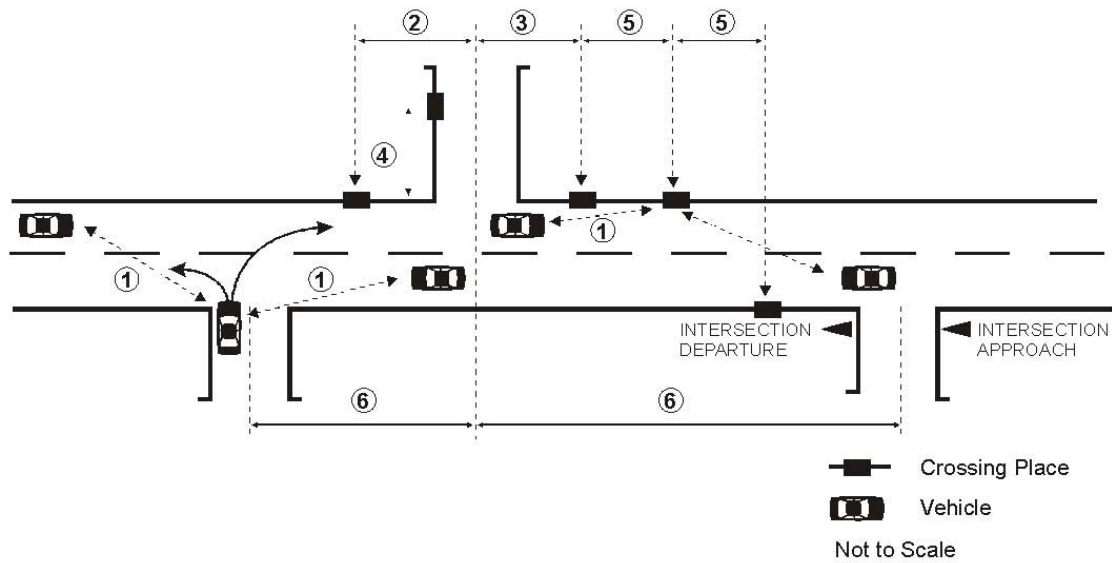


Minimum sight distances for regional arterial routes and state highways: Figure 10



Posted speed (km/hr)	Minimum sight distance to and from access (m)		Minimum crossings to side road distances (m)			Distance between	
	Private (1)	Intersection (2)	Approach (2)	Departure (3)	Side road (4)	Crossings (m) (5)	Intersections (m) (6)
100) rural	170	250	100	100	30	200	800
80	115	175					550
70)	85	130	15	15	15	7.5*	15**
60) urban	65	105	15	15	15	7.5*	15**
50)	45	80	15	15	15	7.5*	15**

*Residential

**All other land uses

Note:

Any access which is new or changed in character, intensity or scale of use and unable to comply with the criteria in 1, 2, 3 and 4 above shall be discretionary activity.