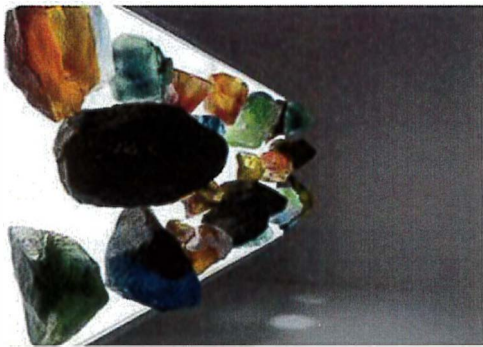


ABOUT THE GALLERY  
Ko wai mātou



WHAT'S ON  
Kaupapa Whakatairanga



OUR COMMUNITY  
Te Hapori



LEARNING HUB  
Akoranga



THE GALLERY SHOP  
Toa hoko toi



CONTACT  
Whakapā mai

## Morrinsville Art Gallery Charitable Trust

PERFORMANCE REPORT FOR THE YEAR ENDED 31<sup>ST</sup>MARCH 2020  
Compiled July 2020  
Wallace Gallery Morrinsville Director, Tonia Geddes

**MORRINSVILLE ART GALLERY  
CHARITABLE TRUST**

**Performance Report  
For the Year Ended 31 March 2020**

Morrinsville Art Gallery Charitable Trust

Contents of Performance Report

For the Year Ended 31 March 2020

Contents of Performance Report	1
Compilation Report	2
Entity Information	3
Statement of Service Performance	4 - 13
Independent Review Report	14
Statement of Financial Performance	15
Statement of Financial Position	16 - 18
Statement of Cash Flows	19
Depreciation Schedule	20 - 22
Notes to and forming part of the Performance Report	23 - 26

## Morrinsville Art Gallery Charitable Trust

### Report on the Engagement to Compile the Performance Report

For the Year Ended 31 March 2020

#### COMPILATION REPORT TO THE MEMBERS OF THE COMMITTEE

##### Reporting Scope

On the basis of information that you provided we have compiled, in accordance with "Service Engagement Standard Number 2: Compilation of Financial Information", the Performance Report of Morrinsville Art Gallery Charitable Trust for the year ended 31 March 2020 as set out on the following pages.

These statements have been prepared in accordance with Generally Accepted Accounting Practice in New Zealand (GAAP) as described in Note 1 to the Performance Report.

##### Responsibilities

You are solely responsible for the information contained in the Performance Report and have determined that the financial reporting basis stated above is appropriate to meet your needs and for the purpose that the Performance Report was prepared. The Performance Report was prepared exclusively for your benefit. We do not accept responsibility to any other person for the contents of the Performance Report.

##### Disclaimer of Liability

Our procedures use accounting expertise to undertake the compilation of the financial statements from information that you provided. Our procedures do not include verification or validation procedures. Accordingly no assurance is given

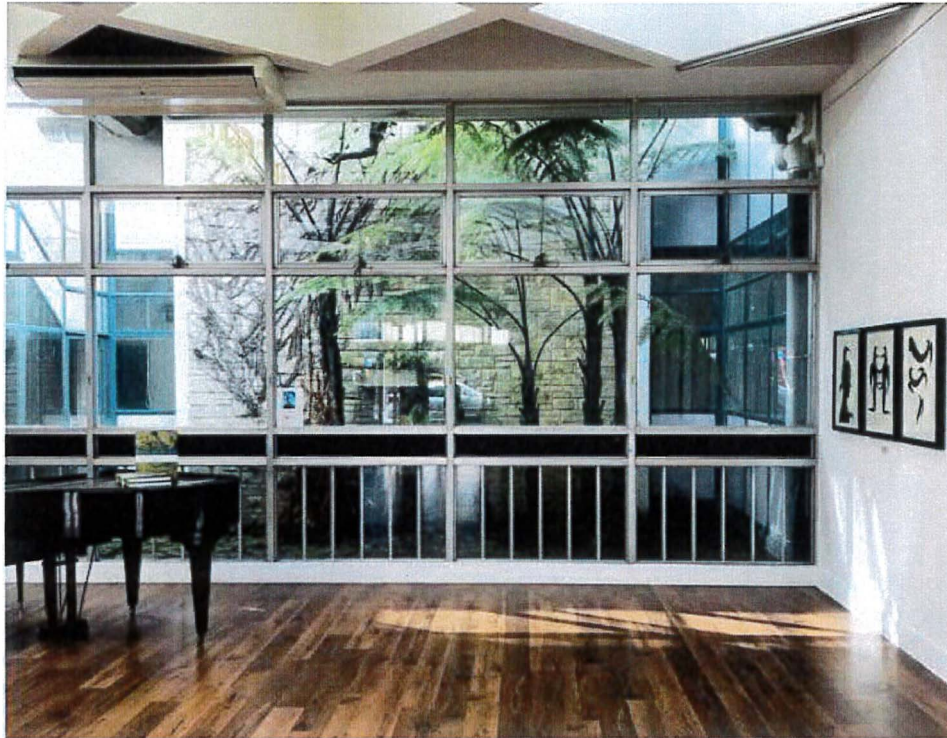
A compilation is limited primarily to the collection, classification and summarisation of financial information supplied by the client. A compilation does not involve the verification of that information. We have not performed an audit or review engagement on the financial statements and therefore neither we nor any of our employees accept any responsibility for the accuracy of the material from which the financial statements have been prepared. Further, the financial statements have been prepared at the request of, and for the purposes of, our client only and neither we nor any of our employees accept any responsibility on any ground whatever, including liability in negligence, to any other person.

*CooperAitken Ltd*

---

CooperAitken Ltd  
Chartered Accountants  
11 August 2020

<b>Legal Name Of Entity</b>	Morrinsville Art Gallery Charitable Trust
<b>Entity Type &amp; Legal Basis</b>	Registered Charitable Trust under the Charities Act 2005.
<b>Charities Registration:</b>	CC21580, 1772226
<b>IRD Number</b>	092-670-902
<b>Entity's Purpose &amp; Mission</b>	Education, training, research, and community development in arts, culture and heritage
<b>Entity Structure</b>	Trust for the benefit of the general public: <ul style="list-style-type: none"> <li>• Governance committee of all trustees, meeting monthly</li> <li>• Delegated operational control to Gallery director, reporting to governance committee</li> <li>• Gallery director overseeing volunteer group, over-all gallery content, public relations, exhibition calendar and shows, budget and expense sign-off. Liaise with Wallace Arts trust</li> <li>• Gallery assistant back up to Director</li> <li>• Separate fundraising committee, reporting to Governance committee</li> </ul>
<b>Main Sources Of Cash &amp; Resources</b>	The majority of the gallery's funding is from community grants, an annual operating grant from Matamata-Piako District Council, donations and community fundraising. The Gallery gratefully received a \$50,000 anonymous donation in Feb 2020.
<b>Main Methods To Raise Funds</b>	Grants, donations and subscriptions are managed by the Gallery Director and Fundraising Committee. Fundraising activities such as the Arts Festival has an internal sub-committee per event. Commission is levied on shop sales.
<b>Reliance On Volunteers And Donated Goods And Service</b>	The entity relies on gifts of volunteer time and expertise to complete work in many essential roles such as governance (board and committees), fundraising, administration and supervising the shop and gallery during operating hours.
<b>Physical Address</b>	Wallace Gallery Morrinsville 167 Thames Street Morrinsville, 3300
<b>Postal Address</b>	Wallace Gallery Morrinsville PO Box 354 Morrinsville, 3300
<b>Bankers</b>	BNZ Morrinsville
<b>Accountants</b>	Cooper Aitken Ltd



## 2020

This year in October, the Wallace Gallery Morrinsville celebrates 10 Years and continues to be one of the most highly regarded arts organisations in the Waikato region. At present the gallery has held upwards of 400(+) exhibitions, workshops and performances with 210,000(+) visitors and 8,000(+) school children visiting the gallery. We are supported by a wide range of individuals, community groups, schools, arts/grants trusts and businesses in and outside of the Matamata-Piako community of which we are proud to belong to.

The recent upgrades within the gallery have established a strong platform from which the gallery will move into its second decade. With refurbished walls, a new lighting system, an online retail system and updated website, the gallery is set to go from strength to strength. It should be noted that these changes have in part been made possible by a very generous anonymous donation to the gallery.

We have recently streamlined our online presence and reinvented all contact forms digitally which are accessible through the newly constructed website and we have also set in motion steps towards online retail. The gallery shop is attracting new and sought-after artisans and the online system is enabling our volunteers to make sales effortlessly through a barcoded system.

Many new initiatives see the gallery working towards operational excellence in all areas. Community engagement is strong, with school groups returning to exhibit in the Community Gallery and the Main Gallery is largely booked through until November 2021.

The Wallace Gallery Morrinsville, with the Wallace Arts Trust Collection at its heart, not only increases tourism in the Matamata-Piako and Waikato region, but has become a centre of excellence frequented by schools and community groups.

Art is an essential part of a rounded education, where a multiplicity of topics can be discussed in an open forum.

## KEY OBJECTIVES

It has been the vision of the gallery committee, from the project's inception, to create a place of pride and inspiration for the community. A successful art gallery, run correctly, benefits the entire community and the surrounding area, and the Trust actively seeks to support the tangata whenua and the young people of the region, our rangatahi.

The gallery will host travelling exhibitions of New Zealand art and where these are available, undertake exhibitions of cultural significance and become a facility for a wide variety of art expression. It will be available for music recitals, public gatherings, private functions and the like where individuals are able to interact with all the forms of artistic expression on display. The Charitable Trust will also host its own functions in the gallery.

Māori iwi of the eastern Waikato will be encouraged to participate as much as possible, and to this end the Director will work with the rangatahi o Ngāti Hauā to enable exhibitions throughout the year. Work is already underway to include Te Reo Māori in the gallery signage and to build upon this on the gallery website.

Continued consultation with Ngāti Hauā is imperative to building trust and encouraging involvement from Māori, and the Trust will strive to build and maintain these positive relationships.

A key aim of the Trust is to shatter the perception of galleries as exclusive places which intimidate and discriminate and instead create an environment that encourages a sense of ownership and belonging for all.



*Ngāire Pene, He kākano pirau, I ruia mai i hea?  
The Decaying seed, where was it sown? 2020*



Morrinsville Intermediate Art Students 2020



## Public Programmes

Our gallery provides a range of opportunities for the public to learn and extend knowledge of art and to broaden engagement with the art world.

### Exhibition previews:

**Held on the first Saturday of each month, with an average of 60+ attendees per event.**

We host openings in the gallery from 10.30am – 12.30pm and Artist Talks are also given on the day at 11am. These are recorded and uploaded to the gallery Facebook page to enable wide participation.

The public are able to have refreshments and socialise before exploring the other activities and venues Morrinsville and the wider Matamata-Piako district have to offer.

### Art Chat:

**Held every third Thursday of the month at 10.30am**

Art Chat welcomes exhibiting and local creatives to the gallery each month to present their artwork. This enables the public to gain more in-depth understanding of the work on display and to speak with the artists directly in an informal way. At times there is a practical element to these sessions. Entry is by gold coin donation

### The Learning Hub:

**Our developing 'See Think Wonder' Learning Hub is a space within the gallery that supports our kaupapa of community engagement with the Arts.**

Initially this space will be used for workshops with school students of all ages from the Matamata-Piako district providing opportunities for students to reflect on the artwork on display and make personal and wider connections. The activities in this space will aim to encourage critical thinking, story-telling and to provide an opportunity to understand other people's experiences.

We aim to complement what the education sector provides in delivery of the arts and ngā toi learning areas of The New Zealand Curriculum. They will be structured around the following strands - understanding the arts in context, developing practical knowledge, developing ideas and communicating and interpreting – and aim to build upon the mahi that is already underway within our schools.



## Recent Exhibition Previews/Artist Talks & Art Chat Workshops



*'I would much rather be interested in the sky'  
opening Jenni Baylis with family and friends,  
Jan Mace – Artist Talk 'For the Love of Stitching',  
The Barbery Days opening and Artist Talk,  
Gemma Reid drawing workshop,  
Pauling Tapping – Alchemy exhibition workshop*

## Engagement with Schools



*Morrinsville Intermediate in the Learning Hub*

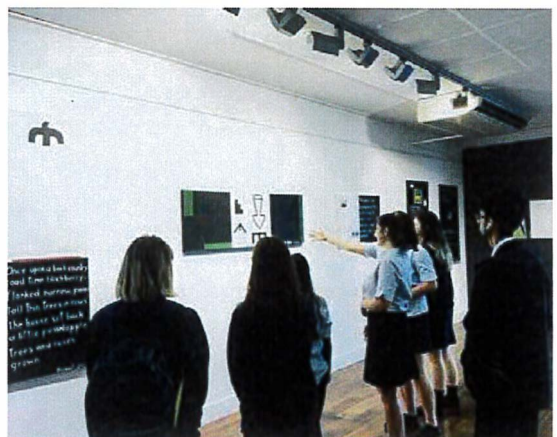
We are building our relationship with the schools in the Matamata-Piako and Waikato regions and have Morrinsville School exhibiting in the Community Gallery this August, followed by Morrinsville College in September and Morrinsville Intermediate in October. David Street School is confirmed for May 2021 and no exhibition fee charges apply for our school groups. We also have had Morrinsville Intermediate attending the gallery weekly since March of this year as they develop and create work for their school's 50<sup>th</sup> Jubilee. We are developing our Learning Hub at the rear of the gallery which will enable specific practical workshops to be held in the future.

36 schools are on our regular mailing list and many of those schools bring their students into the gallery (Morrinsville College seen here at right)

on a regular basis to engage with the exhibitions, meet with staff, and interact with artists, thus providing the students with a personal experience with arts and culture.

For the past 7 years, we have held the Morrinsville Arts Festival which sees students participating on many levels. School kapahaka groups, dance groups, choirs, and instrumental bands have visitors entertained throughout the Festival, as well as workshops for all levels of visitor. Our next Festival is scheduled for October, and as a celebration of our 10 Years, we will be working with artists such as Adrian Worsley to create workshop opportunities for the young people of our community.

In November of this year, we aim to show the visual art folios from Morrinsville College at the gallery and anticipate that this will broaden in time to include other schools from the area. We also maintain an active relationship with tertiary providers, especially Wintec in Hamilton, offering access to the gallery, staff, internships and/or project collaborations to provide real-world experiences for students.



*Morrinsville College viewing The Barberry Days by Peter Dornauf*



**'I would much rather be interested in the sky': Jenni Baylis, Sarah Lee, Joanna Wright**

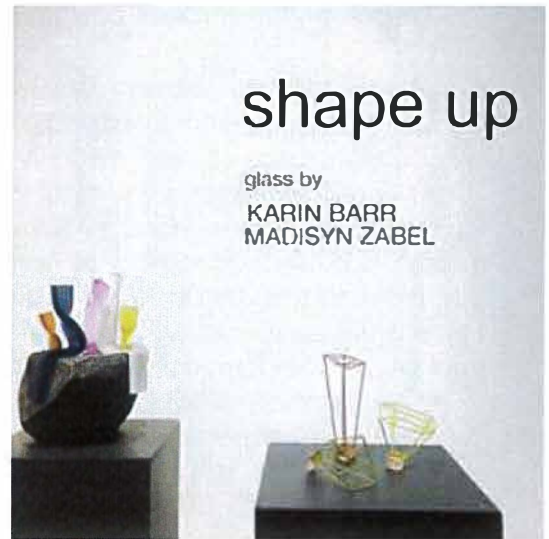
Main Gallery, 11 July – 2 August 2020  
 Circles, spheres and connections to the natural world featured strongly in this group show by Jenni Baylis, Sarah Lee and Joanna Wright.

This was the first time that these artists had exhibited at the gallery. Two of the artists reside in Te Aroha. All three women gave artist talks which were then posted on our Facebook page.



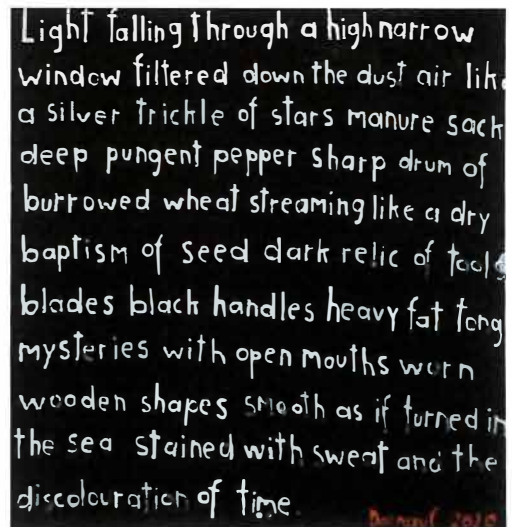
**FOR THE LOVE OF STITCHING – Part 1 & 2 Morrinsville Patchwork, Quilters & Embroiderers Group Show**

Community Gallery, 6 June – 26 July 2020  
 A hugely successful two-part show this exhibition welcomed many local people back to the gallery. Art Chats were well attended and provided opportunities to learn about the range of techniques on display.



**Shape Up Karin Barr and Madisyn Zabel**

Main Gallery, 1 Feb – 1 March 2020  
 A two-person exhibition featured the multidiscipline work of Karin Barr and Madisyn Zabel. Both artists utilise similar glass making processes alongside mixed media to create simple yet whimsical geometric shapes and installations that explore a variety of themes. A well-received show with a high percentage of sales.



**The Barberry Days Peter Dornauf**

Main Gallery, 6 June – 5 July 2020  
 This exhibition re-launched the gallery post Covid-19. Peter gave the first of our artist talks at the well-attended opening. The exhibition was positively reviewed by Norman Franke on the Eyecontact website.

## Communications

Our new website has clear and updated information for our community to view and all forms are now online and easily accessible.

We have over 500 people in our database that we are in regular contact with via email newsletters, which go out at the end of each month, and social media presence is continuously growing with over 2000 followers on Facebook and 750 on Instagram. People visit our website from these platforms to gain more information about exhibitions and events. We have approximately 25,000 visitors per calendar year and 41,000+ people who read our newsletters and stay up to date with us via our website per year.

Half of all visitors are from the Waikato region, with the other 50% coming mainly from Auckland and the Bay of Plenty. Thousands of people come into our district each year to visit the Gallery, to come to one of our public events, to support a friend who is exhibiting or to attend a corporate or school event.

## Business and Community Support

The gallery is used by local businesses and corporations as a venue for hire. Every year we host a wide range of events for many businesses. The Gallery hosts meetings, presentations, award ceremonies, company celebrations and community information sessions related to our community, as well as the greater Waikato region (council matters, tourism workshops, etc.) Most recently, we hosted the Pink Ribbon Breakfast at the gallery.

We run a Supporter's Club which has over 40 members paying an annual subscription of \$240.00 to the Gallery, and we are currently re-establishing our Friends of the Gallery membership.



*The gallery used as a venue for Chamber of Commerce 'Business After 5'*

## Volunteers – the heart of our gallery



Glenda Howie with Claire Swney

The gallery is hugely indebted to the work of its trusted volunteers (23). Generally the day is split into two shifts and volunteers are responsible for the opening and closing of the gallery/shop and meeting and greeting visitors throughout the day. The volunteers meet on the second Tuesday of each month to discuss operational matters and gain knowledge of the coming shows to enable informed discussion with visitors to the gallery.



Alex Wilkinson ceramics

## Gallery Shop & Makers' Market



Our administrative assistant manages the shop and the artisans whose work we stock. All items are now barcoded allowing for seamless purchase and record-keeping via the online retail system.

The newly constructed wooden shelving units have created a stronger shop presence from the street outside and stock is rotated regularly to engage and maintain interest. The shop is placed in such a way that visitors pass through it to get to the Main Gallery and interest is high with consistent sales.

Many of the shop artisans also participate in the Makers' Market. This is held 2-3 times per year at the gallery and continues to grow in popularity.



Makers' Market 2020

## In Conclusion

The Wallace Galley Morrinsville has continued to grow in all areas of its operation and with a newly appointed Chair of the Board and Director intent on improving operational excellence, the gallery is set to move strongly into its second decade.

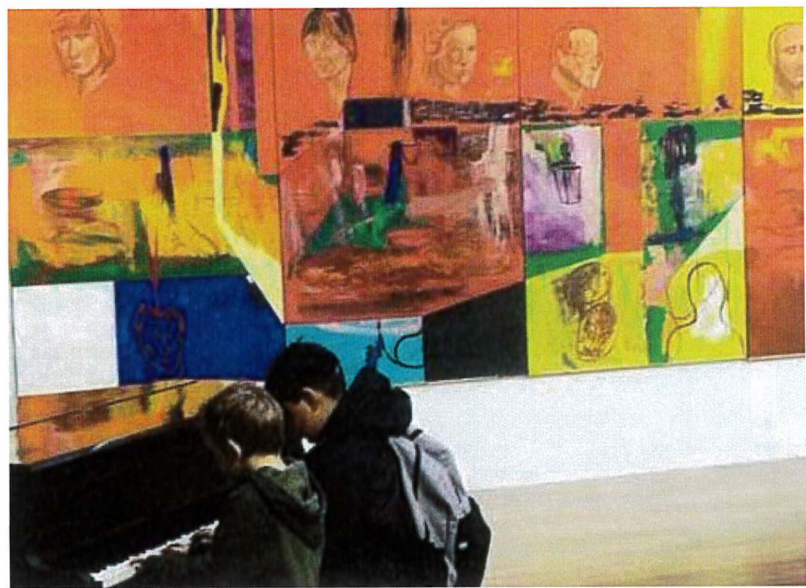
The gallery is drawing accolades from artists, enthusiasts and experts from throughout the country and we continue to build programmes that engage our local communities especially.

We are the envy of many larger centres as we continue to showcase the best of contemporary New Zealand art alongside work by local and national artists.

The Wallace Gallery Morrinsville has become the cultural hub of the Matamata-Piako district. Not only does this facility cater to a variety of exhibitions but businesses and community groups are using the facility and connecting with arts and culture on a regular basis. We foresee that the development of our Learning Hub will facilitate this further.

Thank you for taking the time to learn more about our organisation. We believe the Morrinsville Art Gallery Charitable Trust is running a successful, inspirational and inclusive art gallery that benefits the local and wider community.

Come and visit us!



*Two young visitors play the piano in front of 'Within The Tides' by Jeffrey Harris*

## Independent Review Report

To the Trustees of the Morrinsville Art Gallery Charitable Trust

### Report on the Financial Statements

We have reviewed the accompanying financial statements on pages 3 to 26 which contain the Statement of Financial position as at 31 March 2020, the Statement of Service Performance, the Statement of Financial Performance, the Statement of Cashflows, the Fixed Asset and Depreciation Schedule and Notes to the Financial Statements for the Morrinsville Art Gallery Charitable Trust.

### Trustees Responsibility for the Financial Statements

The trustees are responsible for the preparation of these financial statements in accordance with generally accepted accounting practice in New Zealand so that the statements contained within give a true and fair view of the matters to which they relate, and for such internal control as the trustees determine is necessary to enable the preparation of financial information that is free from material misstatement whether due to fraud or error.

### Reviewer's responsibility

Our responsibility is to express a conclusion on the accompanying financial statements. We conducted our review in accordance with International Standard on Review Engagements (New Zealand) (ISRE (NZ)) 2400, Review of Historical Financial Statements Performed by an Assurance Practitioner who is not the Auditor of the Entity. ISRE (NZ) 2400 requires us to conclude whether anything has come to our attention that causes us to believe that the financial statements are not prepared in all material respects in accordance with the applicable financial reporting framework

This Standard also requires us to comply with relevant ethical requirements.

A review of financial statements in accordance with ISRE (NZ) 2400 is a limited assurance engagement. The assurance practitioner performs procedures, primarily consisting of making enquiries of management and others within the entity, as appropriate, and applying analytical procedures, and evaluates the evidence obtained.

The procedures performed in a review are substantially less than those performed in an audit conducted in accordance with International Standards on Auditing (New Zealand). Accordingly, we do not express an audit opinion on this financial statement.

Other than in our capacity as assurance practitioner we have no relationship with, or interests in the Morrinsville Art Gallery Charitable Trust

### Conclusion

Based on our review, nothing has come to our attention that causes us to believe that the financial statements on pages 3 to 26 do not present fairly, in all material respects the financial position of the Morrinsville Art Gallery Charitable Trust as at 31 March 2020, and its financial performance and cashflows for the year then ended in accordance with the reporting framework within which it is required to report.

*Noble & Lee Ltd*

**Noble & Lee Limited**  
13 August 2020

Morrinsville Art Gallery Charitable Trust

Statement of Financial Performance

For the Year Ended 31 March 2020

	Note	Actual 2020 \$	Actual 2019 \$
<b>Revenue</b>			
Donations, fundraising and other similar revenue	2	93,809	44,581
Fees, subscriptions and other revenue from members	3	11,090	5,530
Revenue from providing goods or services	4	22,437	27,592
Interest, dividends and other investment revenue	5	283	650
<b>Total Revenue</b>		<b>127,618</b>	<b>78,353</b>
<b>Less Expenses</b>			
Expenses related to public fundraising	6	-	6,995
Volunteer and employee related costs	7	69,784	57,261
Costs related to providing goods or services	8	33,357	18,214
Other expenses	9	4,483	518
<b>Total Expenses</b>		<b>107,624</b>	<b>82,988</b>
<b>Surplus (Deficit)</b>		<b>19,994</b>	<b>(4,635)</b>



Morrinsville Art Gallery Charitable Trust

Statement of Financial Position

As at 31 March 2020

	Note	2020 \$	2019 \$
<b>Current Assets</b>			
Cash and Bank Accounts	10	74,464	45,065
GST Receivable		334	535
<b>Total Current Assets</b>		<b>74,799</b>	<b>45,599</b>
<b>Non-Current Assets</b>			
Property, Plant & Equipment		371,975	378,931
<b>Total Assets</b>		<b>446,773</b>	<b>424,530</b>
<b>Current Liabilities</b>			
Payables & Accruals		7,415	5,165
<b>Total Liabilities</b>		<b>7,415</b>	<b>5,165</b>
<b>Net Assets</b>		<b>439,359</b>	<b>419,365</b>

These financial statements are to be read in conjunction with the accompanying Notes and the compilation report. These statements have been reviewed.

Morrinsville Art Gallery Charitable Trust

Statement of Financial Position (continued)

As at 31 March 2020

	Note	2020 \$	2019 \$
<b>Accumulated Funds</b>			
Capital	11	439,359	419,365
<b>Total Accumulated Funds</b>		<b>439,359</b>	<b>419,365</b>

Confirmed as being True and Correct Statements of Financial Position.

The Performance Report has been approved by the Members of the Committee, for and on behalf of the Morrinsville Art Gallery Charitable Trust:

Signature \_\_\_\_\_ Sir James Wallace \_\_\_\_\_ Date \_\_\_\_\_

Signature \_\_\_\_\_ Val Ferguson \_\_\_\_\_ Date \_\_\_\_\_

Signature \_\_\_\_\_ Grant Eddy \_\_\_\_\_ Date \_\_\_\_\_

Signature \_\_\_\_\_ Mary Gibson \_\_\_\_\_ Date \_\_\_\_\_

Signature \_\_\_\_\_ Vivienne Matchett \_\_\_\_\_ Date \_\_\_\_\_

Morrinsville Art Gallery Charitable Trust

Statement of Financial Position (continued)

As at 31 March 2020

Signature \_\_\_\_\_ Nacre Maiden

Date \_\_\_\_\_

Signature \_\_\_\_\_ Russell Mead

Date \_\_\_\_\_

## Morrinsville Art Gallery Charitable Trust

### Statement of Cash Flows

For the Year Ended 31 March 2020

Note	2020	2019
	\$	\$
<b>Cash Flows from Operating Activities</b>		
Cash was received from:		
Donations, fundraising and other similar receipts	93,809	44,581
Fees, subscriptions and other receipts from members	11,090	5,530
Receipts from providing goods or services	22,437	27,592
Interest, dividends and other investment receipts	283	650
	<b>127,619</b>	<b>78,353</b>
Net GST	201	626
Cash was applied to:		
Payments to suppliers and employees	101,899	84,773
	<b>101,899</b>	<b>84,773</b>
<b>Net Cash Flows from Operating Activities</b>	<b>25,921</b>	<b>(5,794)</b>
<b>Cash Flows from Investing Activities</b>		
Cash was received from:		
Receipts from the sale of property, plant and equipment	3,478	-
	<b>3,478</b>	-
<b>Net Cash Flows from Investing Activities</b>	<b>3,478</b>	-
Net Increase in Cash Held	29,399	(5,794)
Cash at the Beginning of the Year	45,065	50,858
<b>Cash at the End of the Year</b>	<b>74,464</b>	<b>45,064</b>
<b>This is represented by:</b>		
Cash and Bank Accounts	74,464	45,064

# Morrinsville Art Gallery Charitable Trust

## Depreciation Schedule

For the Year Ended 31 March 2020

	RATE & TYPE	% PVT USE	Cost on HAND	OPENING WDV	ADDITIONS	DATE of ADDITION	SALE PRICE	PARTSALE PRICE	PROFIT (LOSS)	DISPOSAL DATE	Cost	CAPITAL GAIN/LOSS	DEPN	ACC DEPN	PRIVATE DEPN	ACCUM PRIVATE	CLOSING WDV
<b>Buildings</b>																	
New Gallery - Fire Report(03/10)	.00P		750	750	-	15/03/10	-	-	-		-	-	-	-	-	-	750
Building Consent (06/10)	.00D		839	839	-	30/06/10	-	-	-		-	-	-	-	-	-	839
New Gallery Leasehold Improvements-July	.00D		6,847	6,847	-	31/07/10	-	-	-		-	-	-	-	-	-	6,847
New Gallery Leasehold Improvements-August	.00D		77,363	77,363	-	31/08/10	-	-	-		-	-	-	-	-	-	77,363
New Gallery Leasehold Improvements-September	.00D		72,322	72,322	-	30/09/10	-	-	-		-	-	-	-	-	-	72,322
New Gallery Leasehold Improvements-October	.00D		84,911	84,911	-	30/10/10	-	-	-		-	-	-	-	-	-	84,911
New Gallery Leasehold Improvements-November	.00D		12,854	12,854	-	30/11/10	-	-	-		-	-	-	-	-	-	12,854
New Gallery Leasehold Improvements-March 11	.00D		14,632	14,632	-	31/03/11	-	-	-		-	-	-	-	-	-	14,632
New Gallery Leasehold Improvements-August 11	.00D		1,240	1,240	-	22/08/11	-	-	-		-	-	-	-	-	-	1,240
Leasehold Improvements - Oct 15 - Plumbing	.00D		800	800	-	30/10/15	-	-	-		-	-	-	-	-	-	800
			<b>272,557</b>	<b>272,557</b>	<b>-</b>												<b>272,557</b>
<b>Motor Vehicles</b>																	
2004 Mazda MPV Wagon Rego KPE941 (05/17)	.00D		-	6,957	-	19/05/17	3,478	-	(3,478)	22/08/19	6,957	-	-	-	-	-	-
				<b>6,957</b>	<b>-</b>		<b>3,478</b>	<b>-</b>	<b>(3,478)</b>		<b>6,957</b>	<b>-</b>	<b>-</b>	<b>-</b>	<b>-</b>	<b>-</b>	<b>-</b>
<b>Fixtures &amp; Fittings</b>																	
Sales Counter (10/10)	.00P		1,070	1,070	-	18/10/10	-	-	-		-	-	-	-	-	-	1,070
Crowd Control Barriers (10/10)	.00P		879	879	-	26/10/10	-	-	-		-	-	-	-	-	-	879

These financial statements are to be read in conjunction with the accompanying Notes and the compilation report. These statements have been reviewed.

# Morrinsville Art Gallery Charitable Trust

## Depreciation Schedule (continued)

For the Year Ended 31 March 2020

	RATE & TYPE	% PVT USE	Cost on HAND	OPENING WDV	ADDITIONS	DATE of ADDITION	SALE PRICE	PARTSALE PRICE	PROFIT (LOSS)	DISPOSAL DATE	Cost	CAPITAL GAIN/LOSS	DEPN	ACC DEPN	PRIVATE DEPN	ACCUM PRIVATE	CLOSING WDV
Security Fence (11/10)	.00P		989	989	-	18/11/10	-	-	-	-	-	-	-	-	-	-	989
MIL TV Stand & Mounting Bracket (12/10)	.00D		1,289	1,289	-	09/12/10	-	-	-	-	-	-	-	-	-	-	1,289
Front Entrance Sign (12/10)	.00D		750	750	-	23/12/10	-	-	-	-	-	-	-	-	-	-	750
Vertical Blinds (12/10)	.00D		648	648	-	24/12/10	-	-	-	-	-	-	-	-	-	-	648
Roller Blinds (12/10)	.00D		909	909	-	24/12/10	-	-	-	-	-	-	-	-	-	-	909
Sunscreen Blinds (12/10)	.00D		1,477	1,477	-	24/12/10	-	-	-	-	-	-	-	-	-	-	1,477
Vinyl, Flooring & Carpet(10/10)	.00D		40,325	40,325	-	18/10/10	-	-	-	-	-	-	-	-	-	-	40,325
Security System (11/10)	.00D		7,865	7,865	-	03/11/10	-	-	-	-	-	-	-	-	-	-	7,865
Sound System (06/11)	.00D		2,753	2,753	-	10/06/11	-	-	-	-	-	-	-	-	-	-	2,753
Leader Club Stacker Chairs (05/11)	.00D		3,913	3,913	-	05/05/11	-	-	-	-	-	-	-	-	-	-	3,913
Chairs - Office Max (06/12)	.00P		1,385	1,385	-	22/06/12	-	-	-	-	-	-	-	-	-	-	1,385
Display Cabinets (05/13)	.00P		2,010	2,010	-	31/05/13	-	-	-	-	-	-	-	-	-	-	2,010
Fire Suppression System (06/13)	.00P		19,282	19,282	-	30/06/13	-	-	-	-	-	-	-	-	-	-	19,282
Building Consent (12/13)	.00P		670	670	-	17/12/13	-	-	-	-	-	-	-	-	-	-	670
Black Vinyl Klub Stacker Chairs (10)	.00P		826	826	-	31/07/14	-	-	-	-	-	-	-	-	-	-	826
Warthog Ladder Platform 6 Step (12/15)	.00P		651	651	-	10/12/15	-	-	-	-	-	-	-	-	-	-	651
			<b>87,691</b>	<b>87,691</b>	-		-	-	-	-	-	-	-	-	-	-	<b>87,691</b>
<b>Office Equipment</b>																	
Nilfisk Vacuum Cleaner (09/10)	.00P		551	551	-	28/09/10	-	-	-	-	-	-	-	-	-	-	551
Televisions (09/10)	.00P		1,888	1,888	-	28/09/10	-	-	-	-	-	-	-	-	-	-	1,888
Fire Extinguishers (10/10)	.00P		804	804	-	26/10/10	-	-	-	-	-	-	-	-	-	-	804
Refrigerator (10/10)	.00P		995	995	-	27/10/10	-	-	-	-	-	-	-	-	-	-	995

These financial statements are to be read in conjunction with the accompanying Notes and the compilation report. These statements have been reviewed.

Morrinsville Art Gallery Charitable Trust

Depreciation Schedule (continued)

For the Year Ended 31 March 2020

	RATE & TYPE	% PVT USE	Cost on HAND	OPENING WDV	ADDITIONS	DATE of ADDITION	SALE PRICE	PARTSALE PRICE	PROFIT (LOSS)	DISPOSAL DATE	Cost	CAPITAL GAIN/LOSS	DEPN	ACC DEPN	PRIVATE DEPN	ACCUM PRIVATE	CLOSING WDV
Nova Display Cabinets x 3 (10/10)	.00P		2,359	2,359	-	27/10/10	-	-	-		-	-	-	-	-	-	2,359
Sharp Cash Registers (11/10)	.00P		973	973	-	04/11/10	-	-	-		-	-	-	-	-	-	973
HP Probook 6540b (02/11)	.00D		2,500	2,500	-	11/02/11	-	-	-		-	-	-	-	-	-	2,500
HP8000 Monitor & Software (02/11)	.00D		1,656	1,656	-	11/02/11	-	-	-		-	-	-	-	-	-	1,656
			11,726	11,726	-		-	-	-		-	-	-	-	-	-	11,726
TOTAL			371,975	378,931	-		3,478	-	(3,478)		6,957	-	-	-	-	-	371,975

These financial statements are to be read in conjunction with the accompanying Notes and the compilation report. These statements have been reviewed.

## Morrinsville Art Gallery Charitable Trust

### Notes to and forming part of the Performance Report

For the Year Ended 31 March 2020

#### 1 Statement of Accounting Policies

##### Reporting Entity

Morrinsville Art Gallery Charitable Trust is a Charitable Trust registered under the Charities Act 2005.

The performance report of Morrinsville Art Gallery Charitable Trust has been prepared according to Generally Accepted Accounting Practice in New Zealand as determined by the External Reporting Board

##### Statement of Compliance and Basis of Preparation

Morrinsville Art Gallery Charitable Trust is eligible to apply Tier 3 PBE Accounting Requirements : PBE SFR-A (NFP) Public Benefit Entity Simple Format Reporting - Accrual (Not-For-Profit), on the basis that it does not have public accountability and has total annual expenses of equal to or less than \$2,000,000. The charitable trust has elected to report in accordance with PBE SFR-A (NFP). All transactions in the Performance Report are reported using the accrual basis of accounting.

The accounting principles recognised as appropriate for the measurement and reporting of the Statement of Financial Performance and Statement of Financial Position on a historical cost basis are followed by the charitable trust, unless otherwise stated in the Specific Accounting Policies.

The information is presented in New Zealand dollars. All values are rounded to the nearest \$.

The Performance Report is prepared under the assumption that the entity will continue to operate in the foreseeable future.

##### Specific Accounting Policies

The following specific accounting policies which materially affect the measurement of the Statement of Financial Performance and Statement of Financial Position have been applied:

##### (a) Cash and Cash Equivalents

Cash and cash equivalents comprise cash on hand and demand deposits, together with other short-term, highly liquid investments that are readily convertible into known amounts of cash and which are subject to an insignificant risk of changes in value.

##### (b) Property, Plant & Equipment and Investment Property

Property, plant and equipment is recognised at cost. Historical cost includes expenditure directly attributable to the acquisition of assets, and includes the cost of replacements that are eligible for capitalisation when these are incurred.

No depreciation has been charged against fixed assets. In this respect, these statements are non-compliant with Tier 3 PBE accounting requirements.

##### (c) Income Tax

The charitable trust has charitable status and is exempt from income tax.

##### (d) Goods and Services Taxation (GST)

Revenue and expenses have been recognised in the performance report exclusive of GST except that irrecoverable GST input tax has been recognised in association with the expense to which it relates. All items in the Statement of Financial Position are stated exclusive of GST except for receivables and payables which are stated inclusive of GST. The charitable trust is registered for GST.

##### (e) Changes in Accounting Policies

All accounting policies have been applied on a basis consistent with those from previous performance reports.



Morrinsville Art Gallery Charitable Trust

Notes to and forming part of the Performance Report (continued)

For the Year Ended 31 March 2020

	2020	2019
<b>2 Donations, fundraising and other similar revenue</b>	<b>\$</b>	<b>\$</b>
Donations - General	55,004	4,318
Fundraising	3,305	131
Grant - MPDC	22,000	20,000
Grant - Trust Waikato	13,000	14,000
Grant - Greenlea	-	10,000
Grant - General	500	(3,868)
<b>Total Donations, fundraising and other similar revenue</b>	<b>93,809</b>	<b>44,581</b>
<b>3 Fees, subscriptions and other revenue from members</b>	<b>\$</b>	<b>\$</b>
Supporters Club	7,590	5,500
Friends of Wallace Gallery	3,500	30
<b>Total Fees, subscriptions and other revenue from members</b>	<b>11,090</b>	<b>5,530</b>
<b>4 Revenue from providing goods or services</b>	<b>\$</b>	<b>\$</b>
Commissions Received	12,608	11,313
Exhibition Fees	1,518	974
Venue Hire	2,433	1,974
Sales	236	3,179
Rent - S St Laurence	-	1,217
Projects	526	-
Ticket Sales	5,116	8,935
<b>Total Revenue from providing goods or services</b>	<b>22,437</b>	<b>27,592</b>
<b>5 Interest, dividends and other investment revenue</b>	<b>\$</b>	<b>\$</b>
Interest Received	283	650
<b>Total Interest, dividends and other investment revenue</b>	<b>283</b>	<b>650</b>
<b>6 Expenses related to public fundraising</b>	<b>\$</b>	<b>\$</b>
Advertising	-	6,995
<b>Total Expenses related to public fundraising</b>	<b>-</b>	<b>6,995</b>
<b>7 Volunteer and employee related costs</b>	<b>\$</b>	<b>\$</b>
ACC Levies	169	282
Staff Training	65	-
Wages	69,349	56,979
Wages - Contract Labour	200	-
<b>Total Volunteer and employee related costs</b>	<b>69,784</b>	<b>57,261</b>

Morrinsville Art Gallery Charitable Trust

Notes to and forming part of the Performance Report (continued)

For the Year Ended 31 March 2020

8	2020	2019
	\$	\$
Advertising - General	5,379	-
Cleaning & Laundry	215	189
Communication	2,223	1,993
Exhibition Expenses	5,899	594
Entertainment	-	80
Fixtures & Fittings	1,265	3,961
Insurance	2,967	3,478
Lease - Chorus	5,000	-
Lease - Sharp	1,980	1,980
Merchant Fees & Eftpos (GST excl)	488	1,463
Merchant Fees & Eftpos (GST incl)	1,392	548
Other Administration Expenses	3,080	1,795
Purchases for Resale	348	162
Security	655	-
Subscriptions, Licences & Permits	768	301
Car Expenses	261	658
Fuel & Oil	13	972
Website	585	39
Prior year artist payment error	840	-
<b>Total Costs related to providing goods or services</b>	<b>33,357</b>	<b>18,214</b>
<b>9</b>	<b>2020</b>	<b>2019</b>
	\$	\$
Accountancy	500	-
Bank Fees & Charges	5	15
Interest - Bank Overdraft	-	3
Loss on Sale of Fixed Assets	3,478	-
Review Fees	500	500
<b>Total Other expenses</b>	<b>4,483</b>	<b>518</b>
<b>10</b>	<b>2020</b>	<b>2019</b>
	\$	\$
<b>Bank Account Balances</b>		
BNZ Projects A/c	-	1,507
BNZ 73-00 A/c	13,266	6,635
BNZ 79-97 A/c	61,015	36,739
BNZ 05-00 Petty Cash A/c	183	183
<b>Total Cash and Bank Accounts</b>	<b>74,464</b>	<b>45,065</b>

## Morrinsville Art Gallery Charitable Trust

### Notes to and forming part of the Performance Report (continued)

For the Year Ended 31 March 2020

	2020	2019
<b>11 Capital</b>		
Opening Balance	\$ 419,365	\$ 424,000
<b>Plus:</b>		
Net Surplus	19,994	-
<b>Less:</b>		
Net Deficit	-	4,635
<b>Total Capital</b>	<b>439,359</b>	<b>419,365</b>

### 12 Independence

Grant Eddy, a director of CooperAitken Ltd, prepared this performance report, and he is also a Trustee of this Trust

### 13 Reconciliation of Artist's Payments & Sundry Bankings

Confirmation of the closing balance of Artist's payments has been made with the Gallery Director. With continuing changes in personnel in the gallery over the past 2 years, reconciliations of artists payments and sundry bankings have not been kept up to date. Therefore allocation of these items need verification which is being worked through with current gallery team.

### 14 Related Parties

There were no significant transactions or transactions that were on terms and conditions that are likely to be different from the terms and conditions of transactions in similar circumstances, involving related parties during the financial year (2019: Nil).

### 15 Commitments

The charitable trust has no commitments as at 31 March 2020 (2019: Nil).

### 16 Contingent Liabilities and Guarantees

The charitable trust has no contingent liabilities and no guarantees as at 31 March 2020 (2019: Contingent Liabilities Nil, Guarantees Nil).

### 17 Events Occurring After Balance Date

There were no events that have occurred after the balance date that would have a significant impact on the Performance Report (2019: Nil).